

# Symptom:

Error code appears when operating ACS series

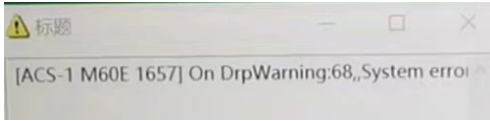


NAC Troubleshooting Guide  
February 2024

## Symptom

When using ACS series, Error code appears on NAC software.

EX) On DRPWarning 68 System error



## Contact NAC team with following information

NAC team will check details of symptom from the information.

### 1) Camera Model, Serial Number (S/N), CID, and IP Address

\* These are shown in plates on the top and the bottom of the camera.

### 2) What operation did you perform when the error message appeared?

### 3) Full screen capture with error message and including time on PC

### 4) Video showing the behavior of the status LEDs of camera when error message appeared

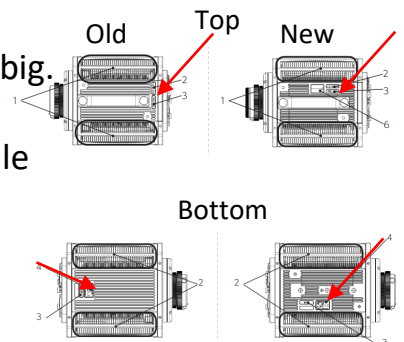
### 5) MCF file after shooting

\* It is ok to send 1~2 frame of mcf file to nac if data is too big.

### 6) Log file

\* Refer to another document showing how to get log file

#### How to get log file with MLink



#### Full screen capture with error message and time

