



GXLink



Copyright © 2008 NAC Image Technology, Inc.

The copyright for this document is owned by NAC Image Technology, Inc.

The copyright for the software described in this document is owned by NAC Image Technology, Inc.

Trademark

MEMRECAM is a trademark of NAC Image Technology Inc.

Microsoft Windows, Windows 2000, and Windows XP are registered trademarks of Microsoft USA, Inc.

TIFF is a registered trademark of Adobe Systems Incorporated.

Other names of companies and products are trademarks or registered trademarks of other companies.

MEMRECAM GXLink

SP-630 Quick Start Guide

Jan 2008

Reference Number 800167-0A

This document describes GXLink version 1.14.

Any copying, duplication or reproduction of any or this entire document without written permission from NAC Image Technology, Inc. is prohibited.

The contents of this document may be changed without prior notice.

Read Carefully Before Using

Safety Precautions

To ensure safe use of this device, please read all of the following precautions before use. This manual contains the following safety alert symbols and warnings in areas where particular caution is necessary while the customer is handling the device. If there is a safety alert symbol within the description, please read the warning carefully before starting operation.

DANGER

This indicates the existence of an imminently dangerous situation that could result in death or serious bodily injury to the user if the precaution is not observed.

WARNING

This indicates the existence of a potentially dangerous situation that could result in death or serious bodily injury to the user if the precaution is not observed.

CAUTION

This indicates the existence of a potentially dangerous situation that could result in slight bodily injury or moderate damage to the user if the precaution is not observed.

This warning sign indicates a warning relating to faulty operation and the existence of areas where there is a concern of damage to this device or connected devices.

Handling Precautions

Safety alert symbol



This is a “Safety Alert Symbol”. This symbol is intended to alert the user of items or operations that could be dangerous to oneself or others during the use of this device. Carefully read the message accompanying this symbol and follow the instructions to safely use this device.



Grounding terminal symbol

This symbol indicates a protective grounding terminal location. Electrical shock from metallic or other parts of this device if not grounded. Please ground to avoid a dangerous situation. If connecting to a power outlet using a 3P-2P conversion plug, connect the grounding wire of the conversion plug to an external grounding terminal.

Warning



Connect or disconnect cables when the power is OFF. Electrical shock or damage may occur if the cable is connected or disconnected when the power is ON.



High voltage warning symbol

Remove the power cable from the outlet when replacing fuses. Do not open the cover. Depending on the device, there may be areas of high voltage inside so electrical shock may occur if the cover is opened.

In addition to those listed above, other unusual conditions may occur during use of this device. Therefore, please carefully read all of the items described in the user's manual for the device. Please contact the dealer directly if there are questions regarding the device.

Provisions Regarding Use and Warranties

This company warrants operation of the software within the range given below for normal use as stipulated in the User's Manual.

This company offers no warranty for this product other than that found in these provisions.

1.Warranty

Upon receipt, if this software does not function normally due to a defect in the recording medium or some other reason, it will be replaced free of charge.

2.Customer Support

We will provide necessary information relating to this software such as serious errors made by this company (bugs) and upgrades in the method of use. This service shall be valid for one year from the date of delivery of this software.

3.Limits of Warranty

This company shall only be liable for this software as stipulated in 1. and 2. above.

This company shall not be liable for any damage that occurs for any reason arising from the use of this software. While we attempted to create a perfect User's Manual, this company shall not be liable for any damage arising from anything written in this document.

4.Copyrights and Rights of Use

The copyright for this software is owned by NAC Image Technology. NAC Image Technology authorizes customers use of this software under the following conditions.

5.Range of Use

This software shall not be used simultaneously on multiple computers.

6.Limitations on Reproduction

Other than for the express purpose of backup for the customer, reproduction of all or part of this software is prohibited.

7.Third Party Use

This software and any copies shall not be lent or transferred to a third party for use.

8. Warranty After Modification or Upgrades

This company shall not warranty normal operation if any alterations or upgrades unrelated to the administration of this company are made to this software. This company shall not be liable for any damages arising for the use of such modifications or upgrades to this software.

(blank page)

Read Carefully Before Using

Safety Precautions

To ensure safe use of this device, please read all of the following precautions before use. This manual contains the following safety alert symbols and warnings in areas where particular caution is necessary while the customer is handling the device. If there is a safety alert symbol within the description, please read the warning carefully before starting operation.

DANGER

This indicates the existence of an imminently dangerous situation that could result in death or serious bodily injury to the user if the precaution is not observed.

WARNING

This indicates the existence of a potentially dangerous situation that could result in death or serious bodily injury to the user if the precaution is not observed.

CAUTION

This indicates the existence of a potentially dangerous situation that could result in slight bodily injury or moderate damage to the user if the precaution is not observed.

This warning sign indicates a warning relating to faulty operation and the existence of areas where there is a concern of damage to this device or connected devices.

Handling Precautions

Safety alert symbol



This is a “Safety Alert Symbol”. This symbol is intended to alert the user of items or operations that could be dangerous to oneself or others during the use of this device. Carefully read the message accompanying this symbol and follow the instructions to safely use this device.

Grounding terminal symbol



This symbol indicates a protective grounding terminal location. Electrical shock from metallic or other parts of this device if not grounded. Please ground to avoid a dangerous situation. If connecting to a power outlet using a 3P-2P conversion plug, connect the grounding wire of the conversion plug to an external grounding terminal.

Warning



Connect or disconnect cables when the power is OFF. Electrical shock or damage may occur if a cable is connected or disconnected when the power is ON.

High voltage warning symbol



Remove the power cable from the outlet when replacing fuses. Do not open the cover. Depending on the device, there may be areas of high voltage inside so electrical shock may occur if the cover is opened.

In addition to those listed above, other unusual conditions may occur during use of this device. Therefore, please carefully read all of the items described in the user's manual for the device. Please contact the dealer directly if there are questions regarding the device.

Provisions Regarding Use and Warranties

This company warrants operation of the software within the range given below for normal use as stipulated in the User's Manual.

This company offers no warranty for this product other than that found in these provisions.

1.Warranty

Upon receipt, if this software does not function normally due to a defect in the recording medium or some other reason, it will be replaced free of charge.

2.Customer Support

We will provide necessary information relating to this software such as serious errors made by this company (bugs) and upgrades in the method of use. This service shall be valid for one year from the date of delivery of this software.

3.Limits of Warranty

This company shall only be liable for this software as stipulated in 1. and 2. above.

This company shall not be liable for any damage that occurs for any reason arising from the use of this software. While we attempted to create a perfect User's Manual, this company shall not be liable for any damage arising from anything written in this document.

4.Copyrights and Rights of Use

The copyright for this software is owned by NAC Image Technology. NAC Image Technology authorizes customers use of this software under the following conditions.

5.Range of Use

This software shall not be used simultaneously on multiple computers.

6.Limitations on Reproduction

Other than for the express purpose of backup for the customer, reproduction of all or part of this software is prohibited.

7.Third Party Use

This software and any copies shall not be lent or transferred to a third party for use.

8. Warranty After Modification or Upgrades

This company shall not warranty normal operation if any alterations or upgrades unrelated to the administration of this company are made to this software. This company shall not be liable for any damages arising for the use of such modifications or upgrades to this software.

(blank page)

Basic Functions

The following can be performed with GXLink.

- **MEMRECAM** GX camera and fx camera control (preview, record, play, download)
- Playback of downloaded images (MCFF), image quality adjustments, format conversion (AVI, TIFF, BMP, JPEG)
- Playback of image files (AVI, TIFF, BMP, JPEG)
- Coordinate measurement (camera preview images, downloaded images, image files)

Images can be displayed by zooming or scrolling.

Synchronized display of images for multiple specified items (camera or files).

Playback range, playback direction and playback speed can be specified for playing back videos.

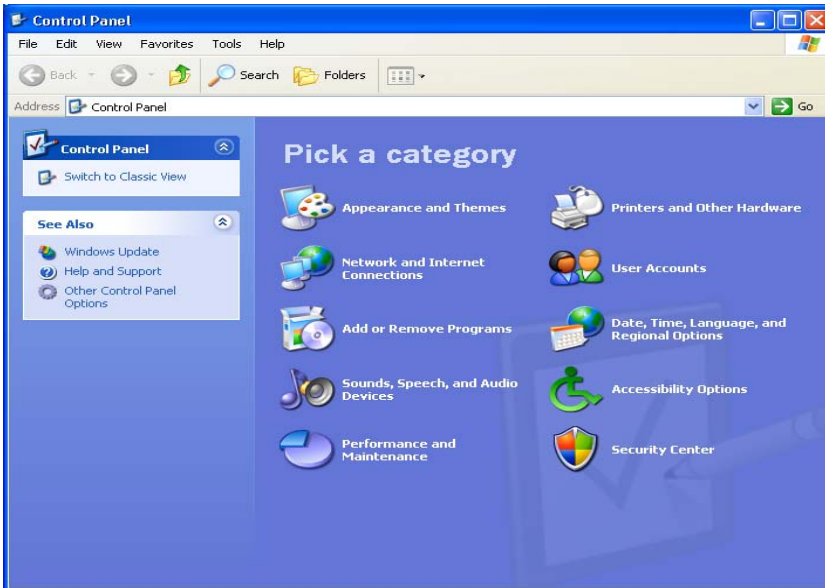
Installation Procedures

Log on to a PC where the user is an authorized member of the Windows “Administrators” group.

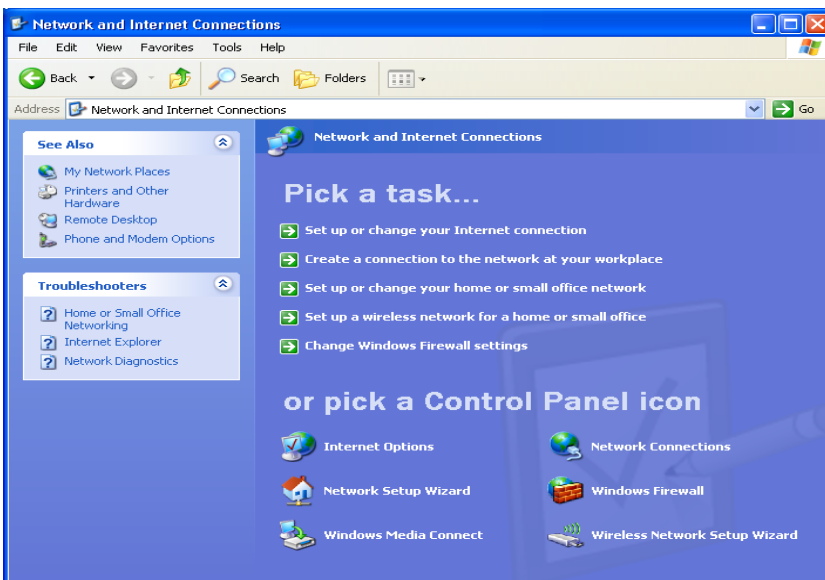
Connect the GX camera that has the powered HUB or is powered to the LAN port used for GX camera control.

■ PC IP Address Settings

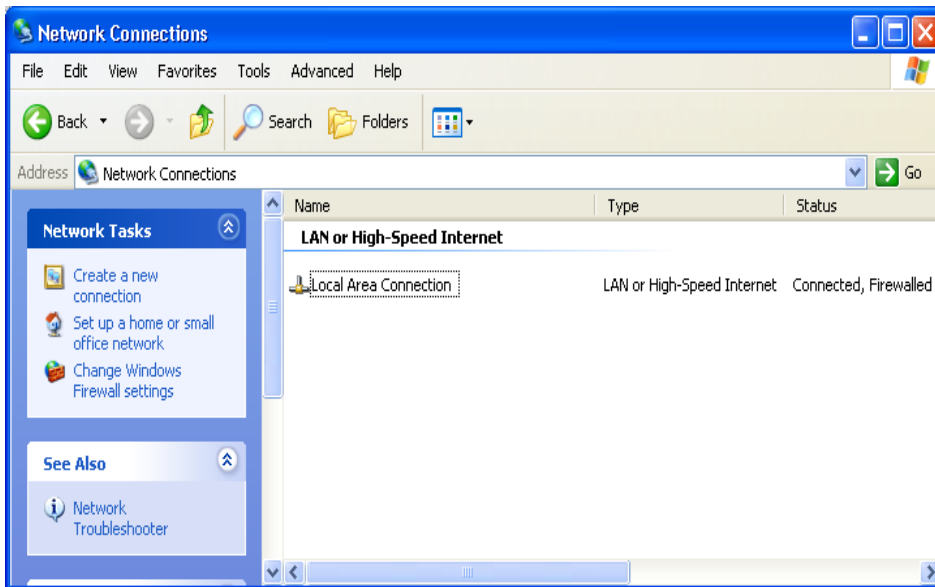
Open the Control Panel via the Windows Start button.



Click to open a “Network and Internet Connections”.



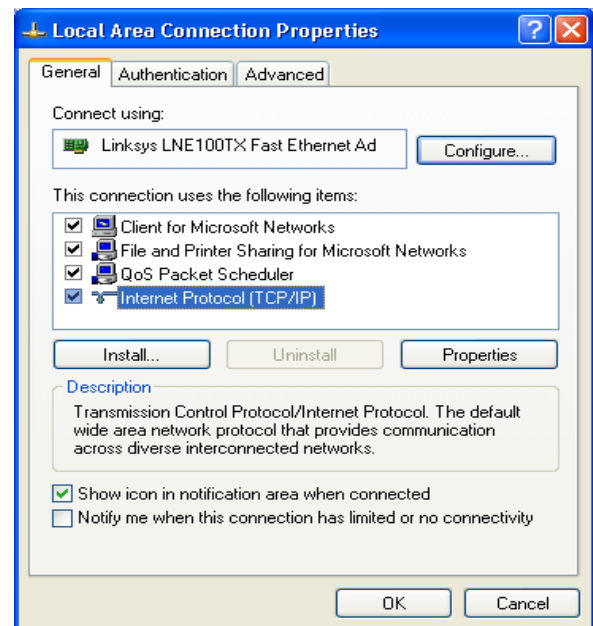
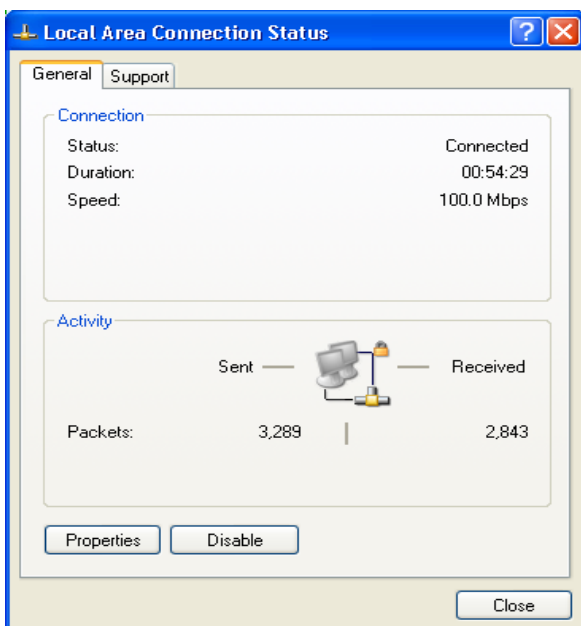
Click to open a “Network Connections”.



Double click to open the LAN port connection used with the GX camera control.

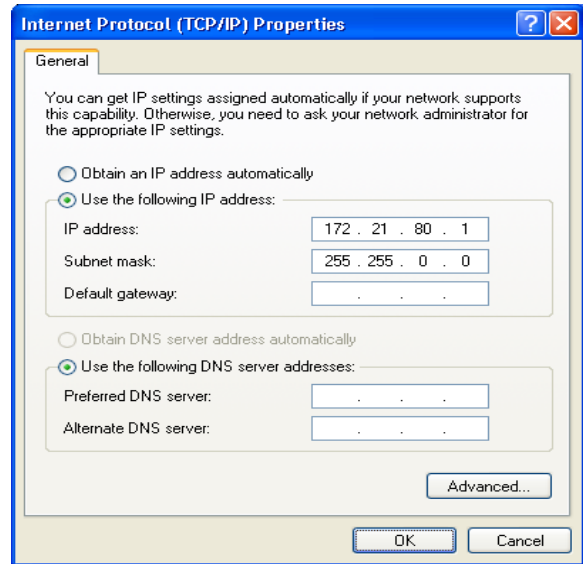
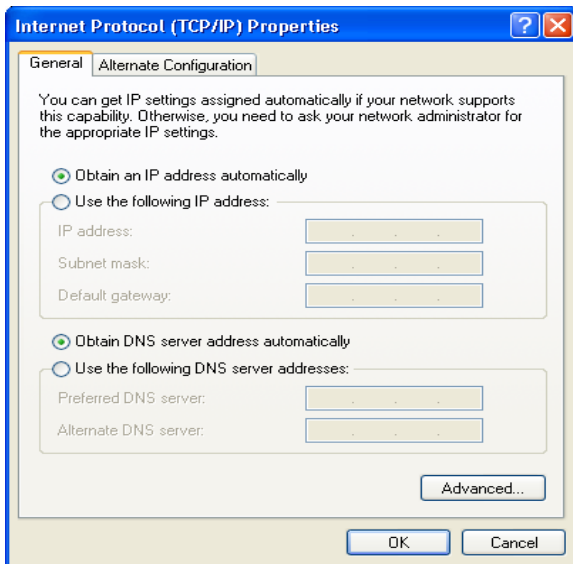
In general, select “Local Area Connection”. This manual describes examples where “Local Area Connection” was selected.

If the number of LAN adapters has increased for camera control, select the connection entitled “Local Area Connection 2”.



Click on “Properties” in the “Local Area Connection Status” window to open the “Local Area Connection Properties” window.

Select “Internet Protocol (TCP/IP)” at the bottom of the list under “This connection uses the following Items” from the “Local Area Connection Properties” and click on “Properties” immediately under that to open the “Internet Protocol (TCP/IP) Properties” window.



As shown in the figure to the right, set the PC IP address to 172.21.80.1 and the subnet mask to 255.255.0.0.

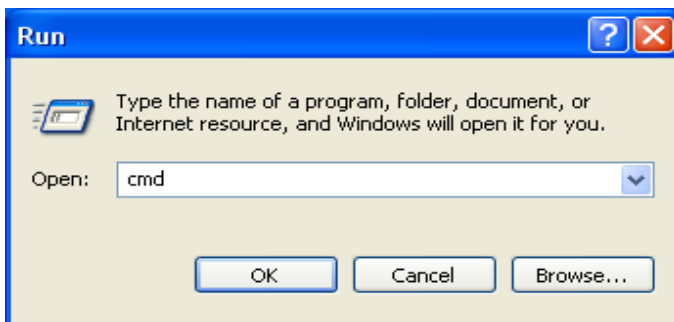
After setting, click OK to close the “Internet Protocol (TCP/IP) Properties” window.

Next, click “Close” in the “Local Area Connection Properties” window to verify the settings.

Finally, click “Close” in the “Local Area Connection Status” window to close.

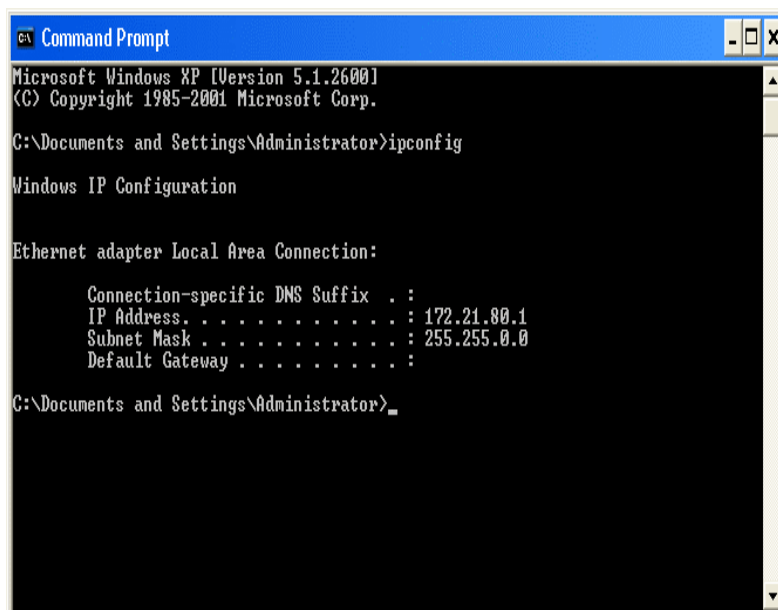
The IP address set for the PC can be verified with the ipconfig command with the command prompt.

Click “Designate File Name” on the Windows Start button to open.



Type cmd in the name and click OK to display the command prompt window.

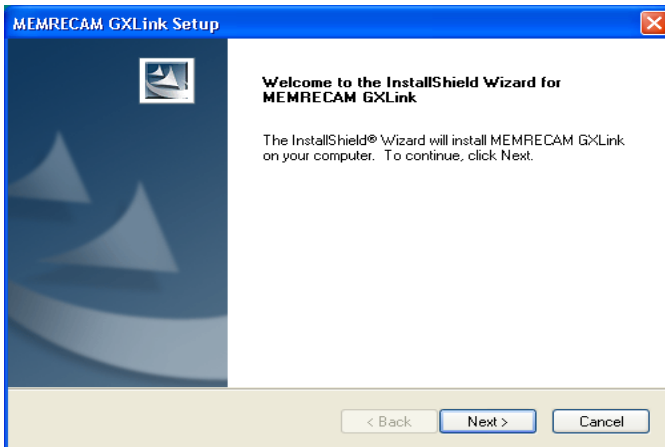
Type ipconfig and press Enter to display the PC IP address.



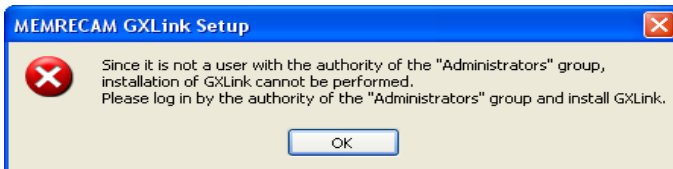
※If the PC IP address is set higher than 172.21.80.1, the PC and GX camera IP address will not be set the same. Also, since communication is not possible if the IP address is not set on the same LAN for the PC and GX camera, in this example, the IP address for the PC and GX camera must both be 172.21.*.*.

■GXLink Installation

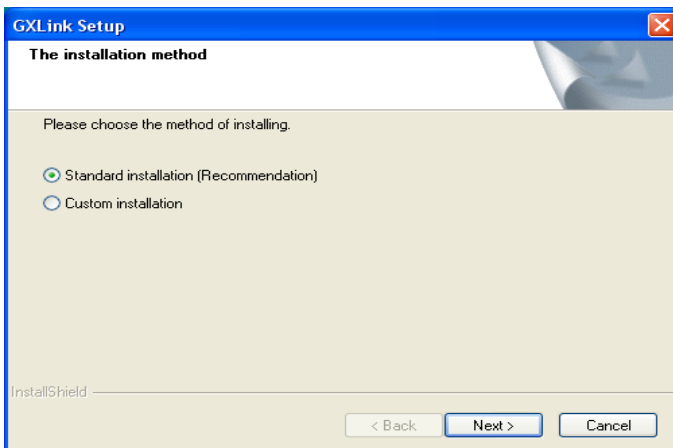
After all of the PC applications have been completed, insert the GXLink CD into the CD drive on the PC. The MEMRECAM GXLink installation will automatically begin.



Once installation has started, "Welcome to MEMRECAM GXLink Setup" will be displayed. Click "Next" and installation will begin.



If a user other than an authorized Administrator starts the installation, the message shown at the left will be displayed. Log in as an authorized user for GXLink installation.

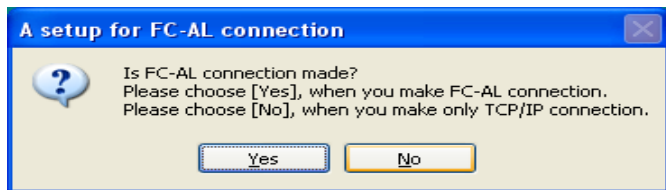


Select standard installation and press "Next". The optimal components are installed with the standard installation.

Service is necessary to connect the MEMRECAM fx camera with FC-AL.

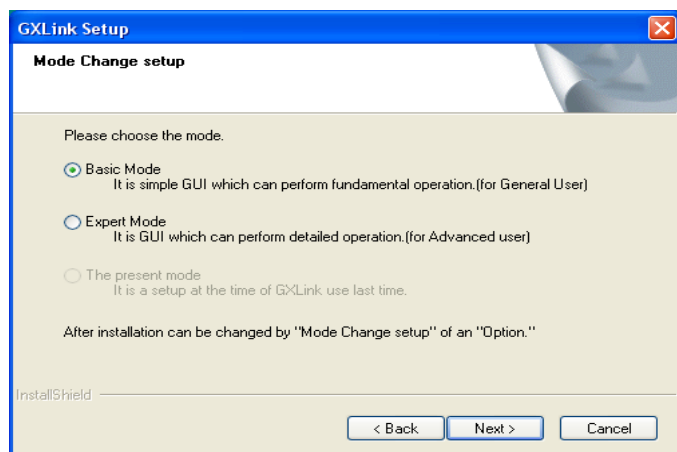
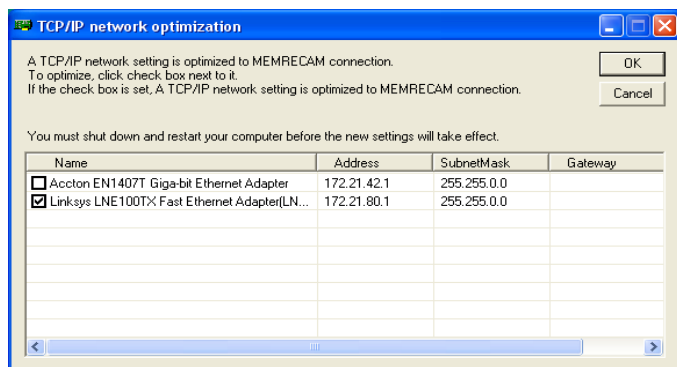
To verify if service has been started, ask if the FC-AL connection has been made.

If using only the MEMRECAM GX camera, click “No”.



Optimize the LAN adapter used for GX camera control for camera control communications.

Check the adapter box with 172.21.80.1 in the Address column and click OK.



Select the basic mode to operate the GXLink.

Basic Mode

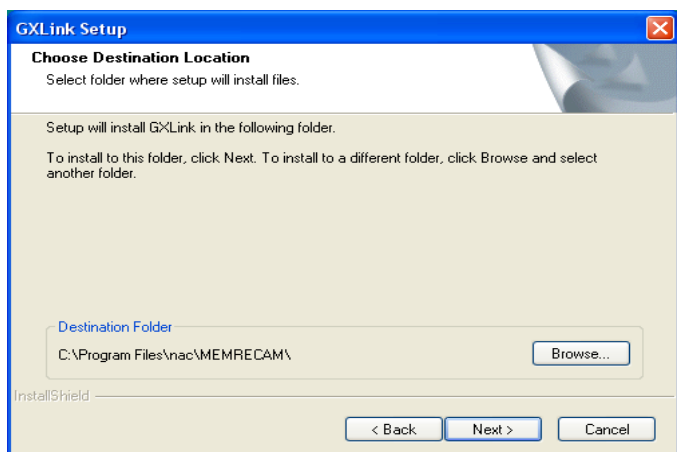
Simple GUI to perform basic operations.

Expert Mode

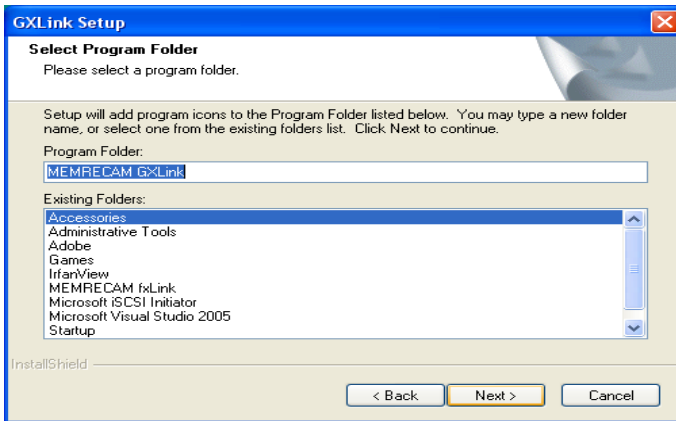
GUI to perform detailed settings.

Current Mode

This item cannot be selected when the GXLink is initially installed.

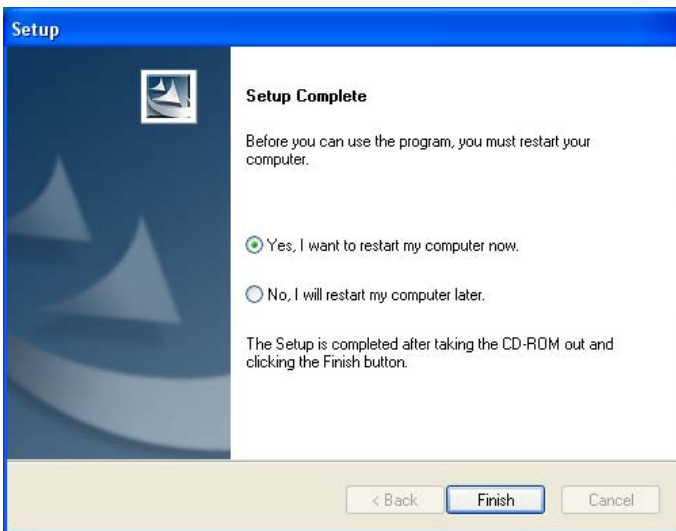


Click on “Browse...” to set if changing the drive or folder for installing the program. Click “Next” after designating the folder.



Click “Next” after designating the program folder name.

This document is for a description that assumes the default program folder has been designated. If another folder is designated, please switch the setting designating the menu display for the startup method.



Click “Finish” after the setup completion dialogue is displayed.

Before using the program, the computer must be restarted.

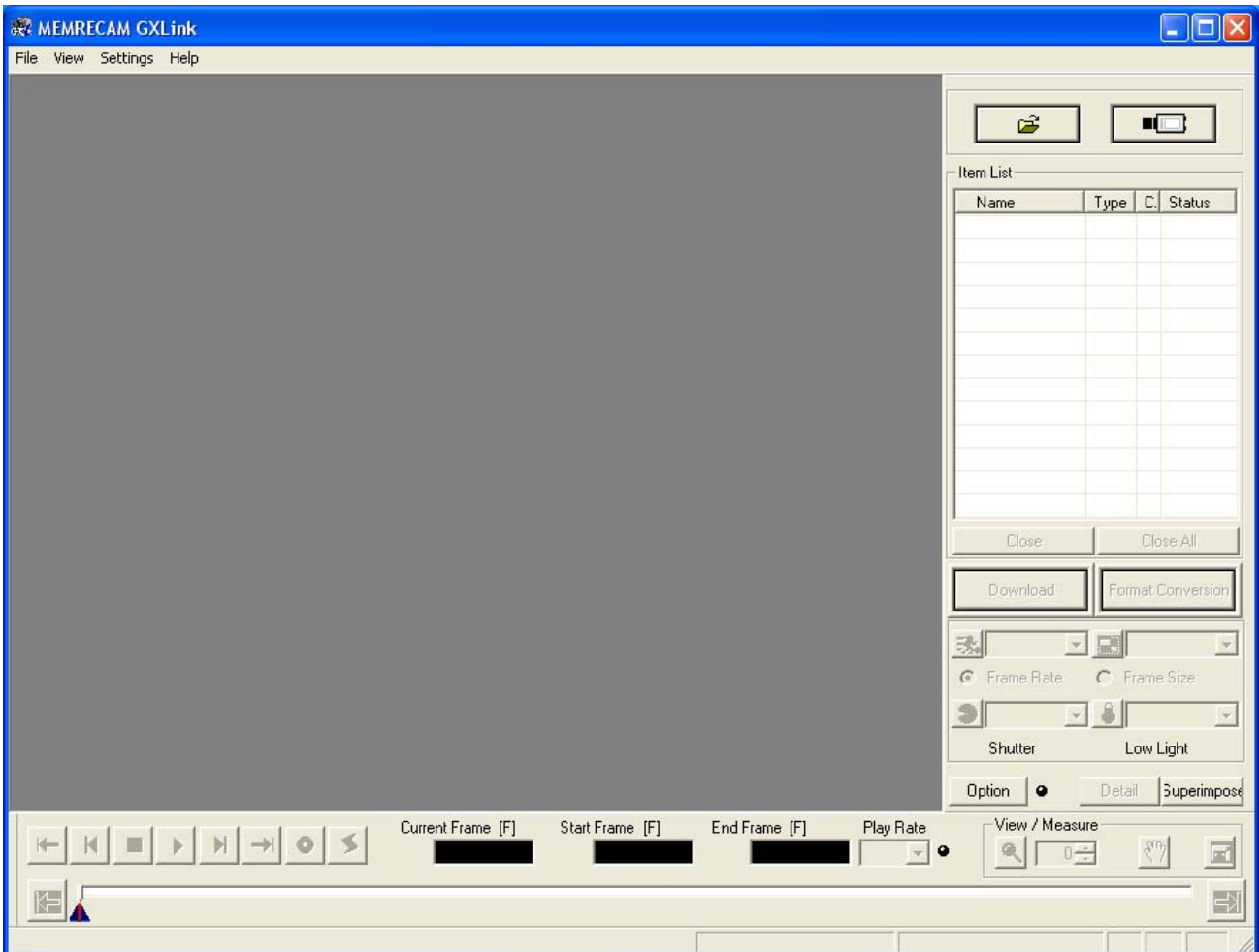
GXLink Startup

Double click on the GXLink icon on the desktop to start the GXLink application.



Once the GXLink starts, the following screen is displayed.

(This document is for a description that assumes the GXLink GUI setting is in the basic mode.)



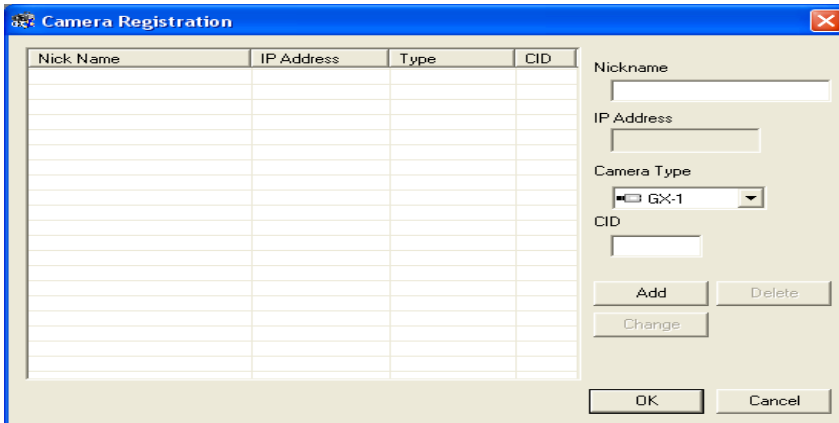
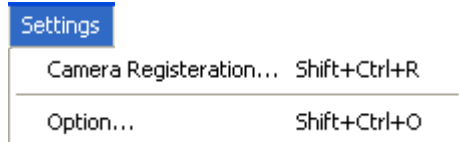
[Startup Screen: Basic Mode]

Camera Registration

With GXLink, a “Nickname” can be assigned to the GX camera during camera registration.

If camera registration is not performed, the name of the camera will be the Camera Type and the CID (camera identification number).

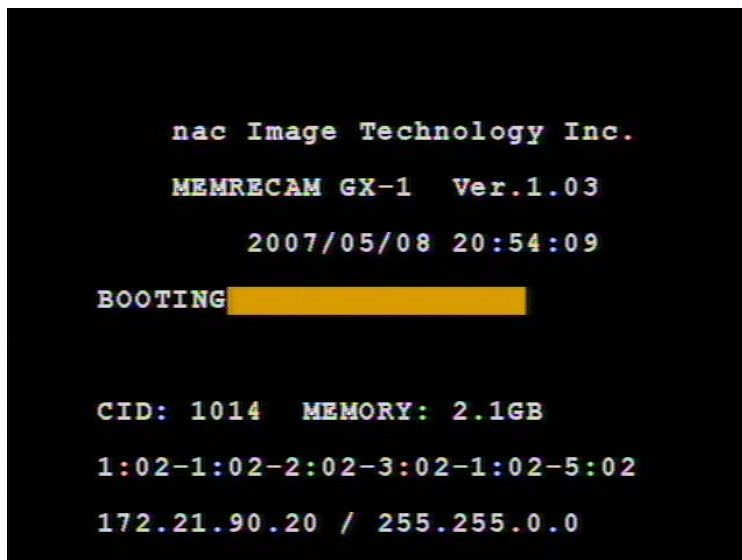
When setting a nickname for the camera, select “Camera Registration” from the “Setting Menu” to display the camera registration dialogue.



Input the Nickname, Camera Type and CID in the Camera Registration screen and click “Add”.

The Nickname and other input data are displayed in the Camera Registration screen list. Click “OK” to complete registration.


- * CID is a number to identify the MEMRECAM GX camera.
- * The camera IP address is set at factory shipment.
- * The camera IP address, Camera Type and CID are displayed on the video during camera startup.



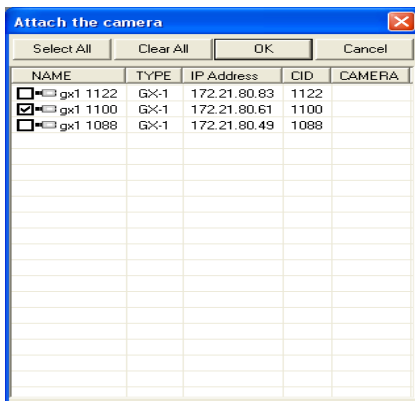
The Camera Type, CID and IP address can be verified even with the GXLink camera search function, described next.

They can also be verified with TOP MENU> SYS MENU> INFO on the optional JPAD3 remote control.

Camera Connections

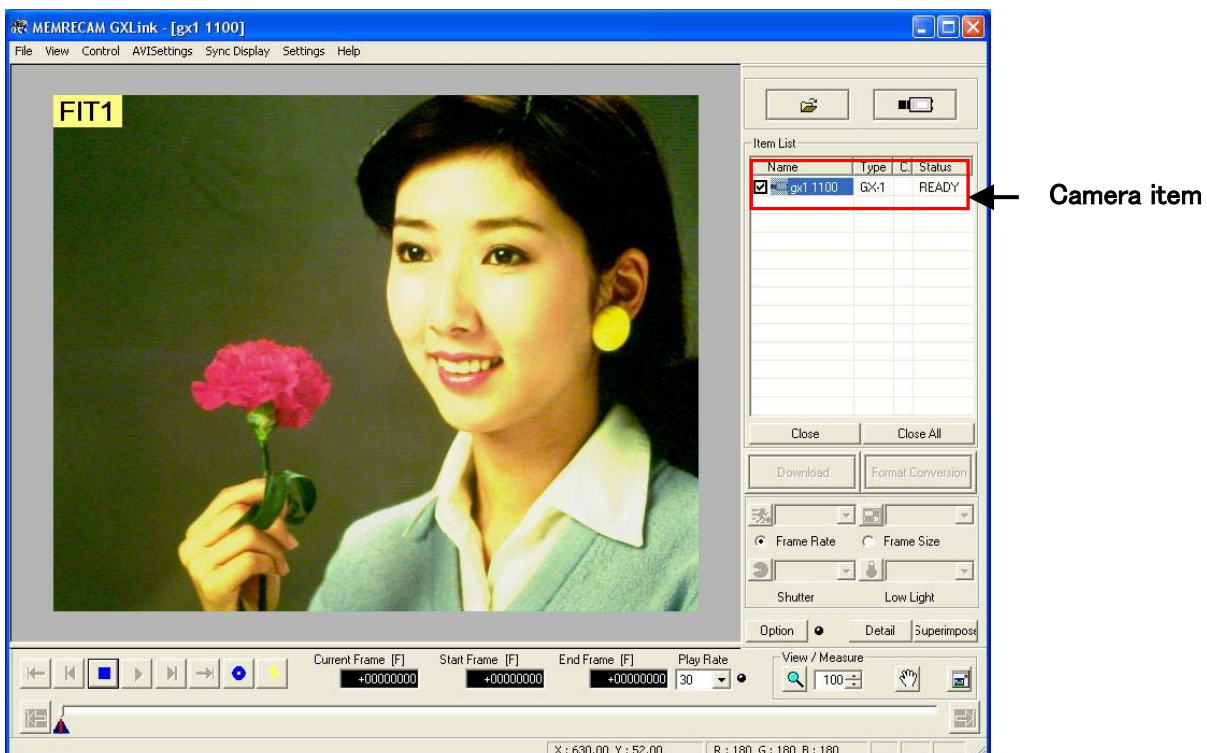
Click on the “Attach the camera”  on the “Item Tool Bar” to begin connections with the camera. GXLink searches for GX cameras that exist on the network when the “Attach the camera” button is pressed, which are displayed on the Attach the camera window. Cameras located are displayed in this window and cameras connected with other PC are shown with a red X, where connections cannot be made. Cameras that can be connected have a check in the box to the left of the camera. Click OK and all of the cameras checked will be connected.

If there is only one camera in use and that camera is the camera registered, it will not be displayed in the Attach the camera window but the camera will be connected.



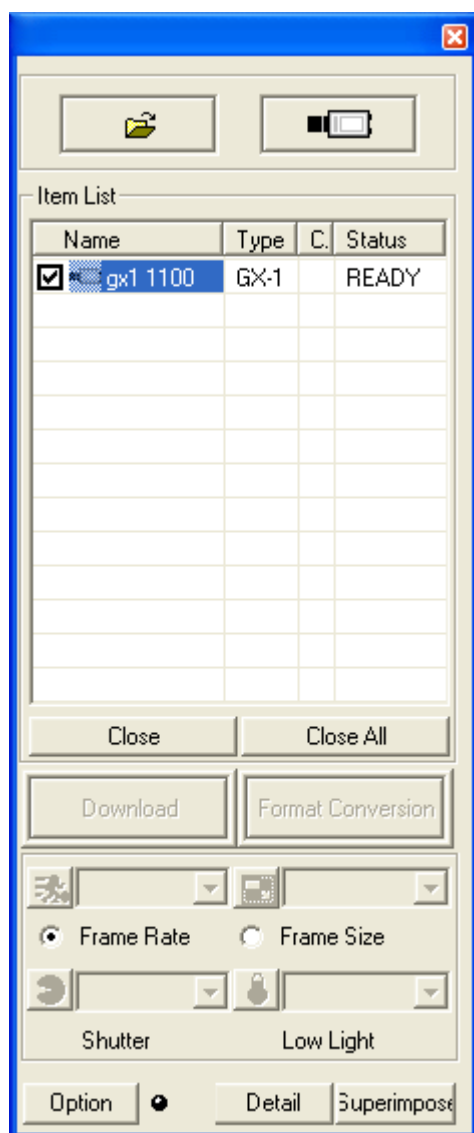
Once “Camera Connections” is started, the camera designated in the item list is added as a camera item and the camera nickname, camera type and camera status is displayed. The camera item status display is updated each time the camera status is changed, and the camera status is displayed.

Once the camera connections are completed, the camera image is displayed in the image display section.



Tool Bar

■ Item Tool Bar (Basic Mode)



Add Items

Open Image File



Open the image file and add the item list as a file item.

Attach the camera



Connect cameras and add the item list as a camera item.

Item List

Displays items (connected cameras, image files open).



Thumbnail setting check box



Item mark



Camera Items

Name

Camera nickname

Type

Camera type or memory segment. The memory segment is MEM.

CAMERA

Camera port number (for multiple camera head DRP)

Status

Camera status or memory segment number.



File Items

Name

Image file base name

Type

Image file type (mcf, avi, tif, bmp, jpg)

Close

Delete item in image display from the list

If camera, the camera is disconnected.

Close All

Delete all of the items from the list

Download

Download image data (MCFF) from the camera

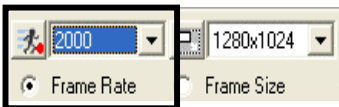
Download image data recorded on a camera to a PC in MCFF format.

Format Conversion

Convert format of image data (MCFF)

Converts and saves MCFF files in an AVI/BMP/TIFF/JPEG format.

When specifying conversion to MCFF, it is saved with the time removed.



Frame Rate Setting

Sets the camera frame rate during the VIEW mode.

If the frame rate priority is selected, all of the frame rates are displayed on the pull down menu.

If frame size priority is selected, the frame rates that can be selected for the frame size selected are displayed on the pull down menu.



Frame Size Setting

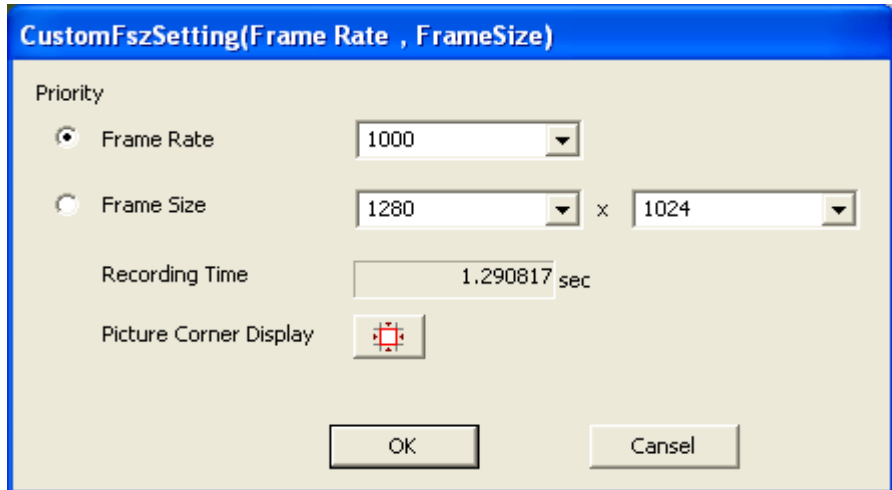
Sets the frame size for the camera during the VIEW mode.

If the frame size priority is selected, all of the frame sizes are displayed on the pull down menu.

If frame rate priority is selected, the frame sizes that can be selected for the frame rate selected are displayed on the pull down menu.


Custom Settings (frame rate, frame size)

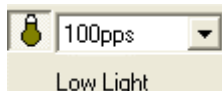
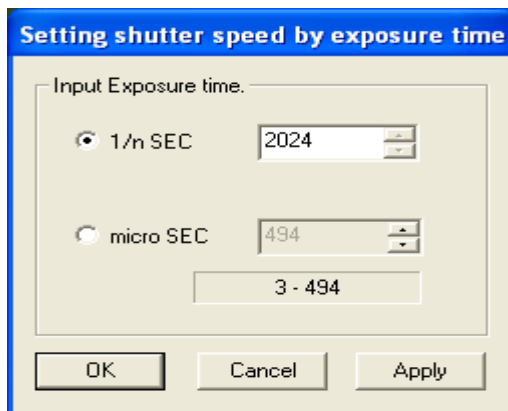
Click on the left button on the pull down menu for frame rate and frame size and the following dialogue is displayed. The desired frame rate and frame size can be set. However, the values that can be set for frame rate and frame size are limited.




Shutter Speed Settings

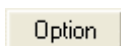
Select the shutter speed from the pull down menu to set.

Click on the custom shutter button  and more detailed shutter speeds can be set.



Low Light Setting

Click the low light mode button  during the VIEW mode to verify the subject with the exposure corresponding to the frame rate designated on the pull down menu. Verification of the subject, image angle adjustments and focusing adjustments can be made for standard lighting conditions even when the illumination for photographing is not ON.



Options

Click on the Options button to display the dialogue for the GXLink GUI Selection of the GUI (individual – collective) for format conversion can also be made.

Detail

If one camera is connected, the dialogue for the detailed settings is displayed.

Detail

A dialogue for the list of camera settings is displayed if there are multiple camera connections.

Double click on the cells for each parameter in the row entitled “Collective” to display the dialogue for the settings. Parameters for all of the connected cameras can be set.

Parameters for the cameras selected can be set in the cells for the selected camera.

The list of camera setup

ID	TYPE	Nickname	IP Address	MAC Address	CID	DRP Version	Memory	Master/Slave	Memory Segment	Live Image Resolution	Rotate Image
0	Collective	gx1 1100	172.21.80.61	00-05-61-12-00-38	1100	1.15	2.1 GB	---	2.1GBx1	---	0
0	GX-1	gx1 1122	172.21.80.83	00-05-61-12-00-51	1122	1.15	2.1 GB	---	2.1GBx1	---	0

Camera Connection Information

The list of camera setup																
Camera Configuration Information Rec. Parameters Play Parameters Play Parameters(Image Quality) Play Parameters(Range) Connection Configuration Information																
ID	TYPE	Nickname	Status	Seg	Scene No.	Frame Rate	Frame Size	Blocks	Rec Method	TriggerTiming	Shutter	LowLight	AE	AE AREA	AE	
	Collective															
0	GX-1	gx1 1100	READY	1	1	1000	1280x1024	1	NORMAL	CENTER	OPEN	OFF	OFF	FULL	---	
0	GX-1	gx1 1122	READY	1	1	1000	1280x1024	1	NORMAL	CENTER	OPEN	OFF	OFF	FULL	---	

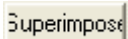
Recording Parameters

The list of camera setup																
Camera Configuration Information Rec. Parameters Play Parameters Play Parameters(Image Quality) Play Parameters(Range) Connection Configuration Information																
ID	TYPE	Nickname	Status	Frame No.	Seg	Scene No.	Frame Rate	Frame Size	Blocks	Rec Method	Shutter	AE	AE AREA	AE CYCLE	Comment	
	Collective															
0	GX-1	gx1 1100	READY	645	1	0	1000	1280x1024	1	NORMAL	OPEN	OFF	FULL	---		
0	GX-1	gx1 1122	READY	0	1	0	1000	1280x1024	1	NORMAL	OPEN	OFF	FULL	---		

Playback Parameters

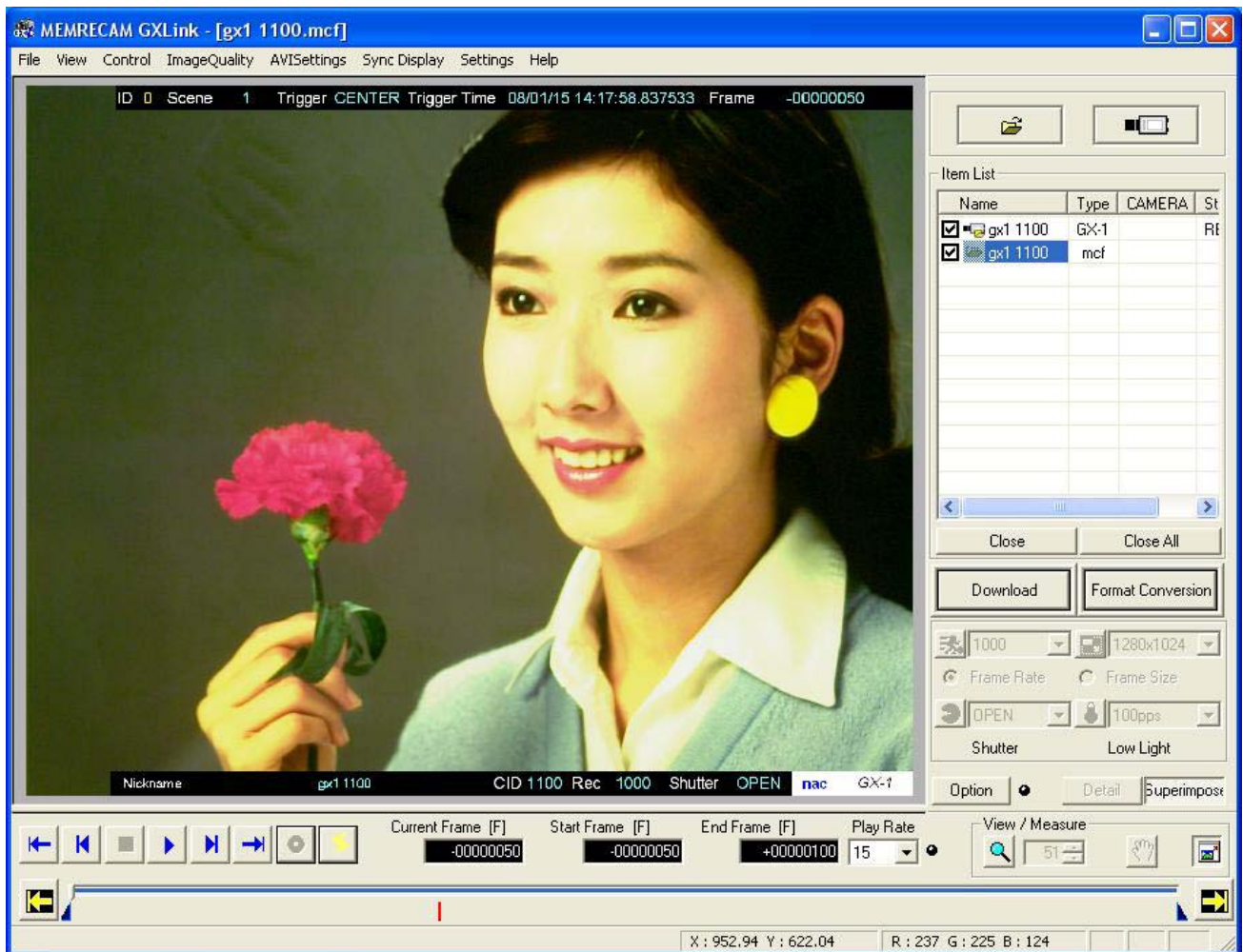
The list of camera setup																
Camera Configuration Information Rec. Parameters Play Parameters Play Parameters(Image Quality) Play Parameters(Range) Connection Configuration Information																
ID	TYPE	Nickname	Status	Frame No.	Gain	Gamma	White Balance	Edge Enhance	Knee	Chroma	RGB Matrix					
	Collective															
0	GX-1	gx1 1100	READY	645	NO...	NO...	AUTO	NORMAL	ON	100%	ON					
0	GX-1	gx1 1122	READY	0	NO...	NO...	AUTO	NORMAL	ON	100%	ON					

Playback Parameters (Image Quality)



Superimpose Information

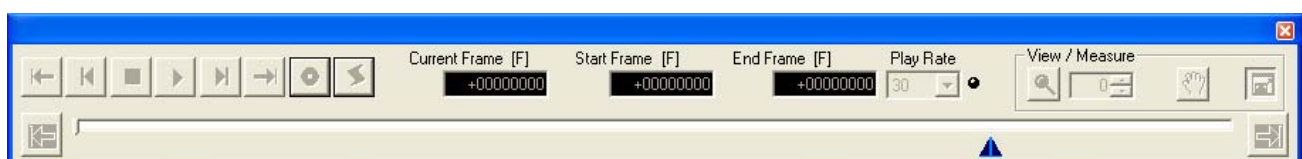
Click on the superimpose information button to display information for camera photography on the MCFF image. If the format is changed, the information will be superimposed on the converted file image.



■ Main Tool Bar

Tool for recording (camera only) and playback of items selected from the item list.

Displays image zoom / scroll function / entire image.



Main Tool Bar: Basic Mode

Once a connection between the PC and the camera has been established, the “Main Tool Bar” is operational.



Names of the Types of Display Buttons and Their Functions

Types of display buttons and their functions are described as follows.

Click on these display buttons with the mouse for camera control operation.

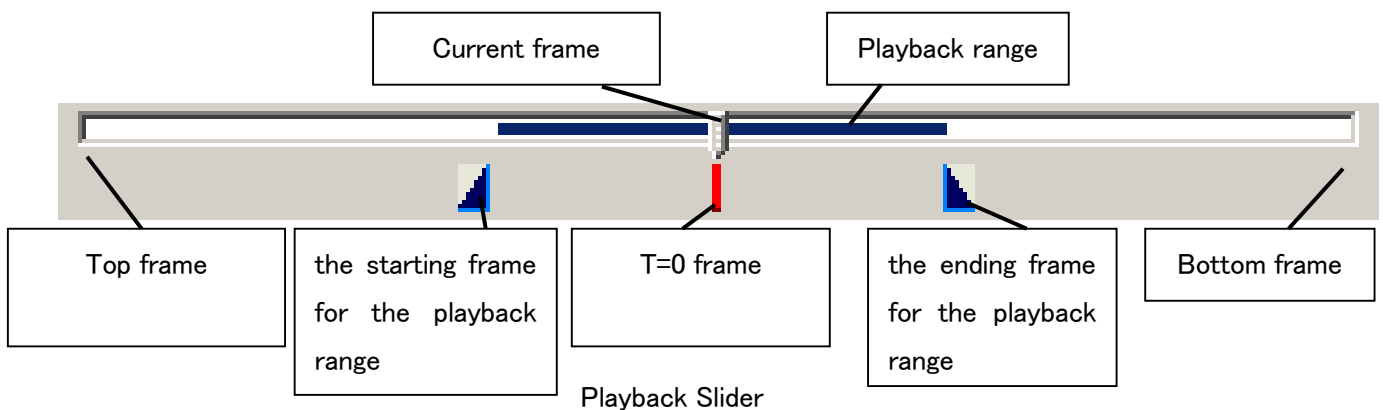
	GO TO START	Displays the starting frame for the playback range
	REV STEP	Reverse 1 frame.
	STOP	Stop PLAY, VIEW and ARM modes, and access the READY mode
	PLAY	Playback / Playback loop
	FWD STEP	Forward 1 frame
	GO TO END	Displays the ending frame for the playback range
	VIEW / ARM	Access VIEW mode when in the READY mode
	VIEW / ARM	Access ARM mode (record) when in the VIEW mode
	TRIG	Manual trigger when in the ARM mode
		Trigger frame display when in the READY mode
		Sets the current frame as the starting frame for the playback range
		Sets the current frame as the ending frame for the playback range

Click the “PLAY” button during playback for a playback loop.

Click the “REV STEP”, “FWD STEP” buttons during playback to change the playback speed.

Playback Slider

Used to designate frames for playback and playback range settings.



Download Images

Determine the data file name and range to be downloaded and download the camera image.

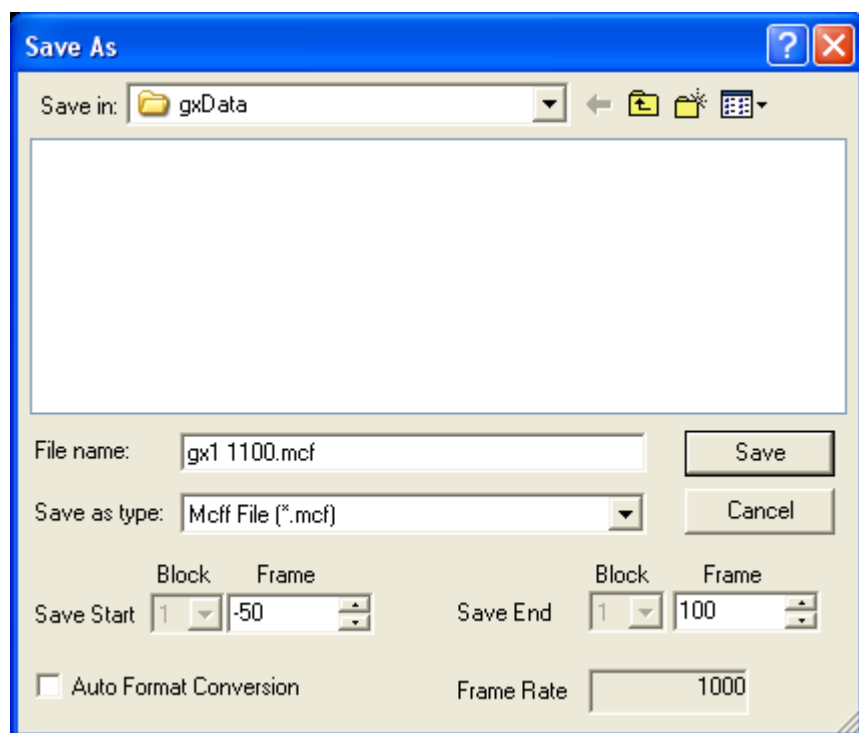
It will take a long time to download long image data.

Setting the shortest possible range for saving is recommended.

Setting the recording parameters for photographing is effective in setting a smaller frame size and shortening the time.

Click “Download” under the item list.

When camera 1 is connected, click “Download” and the “Save As” dialogue is displayed.



Designate the range to be saved, the file name and the folder for saving and then press the Save button to start the download.

The range for saving is designated in relative time using the frame number and trigger frame as the standard. If the unit for the frame counter display menu is a frame, the units for the frames and frame counter display are in seconds in relative time, and can be designated up to a single microsecond.

If controlling multiple cameras, click “Download” to display the “Download” dialogue.

Download										
Name	T	C	S	Rec. Top[F]	Rec. Bottom[F]	Frame Rate	Save. Start[F]	Save. End[F]	File name	Save in
<input checked="" type="checkbox"/> Collective										
<input checked="" type="checkbox"/> gx1 1100	G	0	1	-645	645	1000	0	100	gx1 1100.mcf	gxData
<input checked="" type="checkbox"/> gx1 1122	G	0	1	-645	645	1000	0	100	gx1 1122.mcf	gxData

Double click on each cell in the table to change the settings.

In the “Collective” row, parameters can be set for all of the cameras connected.

In the camera row, parameters can be set for the selected camera.

Items that can be set with the “Download” dialogue

<input checked="" type="checkbox"/>	Downloads the data checked. When not downloading, remove the check mark.
Save Start	<p>Sets the starting frame for the range to be set [F] or the start time [sec].</p> <p>If the unit for the frame counter display menu is a frame, the units for the frame counter display are in seconds in relative time, and can be designated up to a single microsecond.</p>
Save End	<p>Sets the start save for all of the blocks during multi-trigger recording.</p> <p>Sets the ending frame for the range to be set [F] or the end time [sec].</p> <p>If the unit for the frame counter display menu is a frame, the units for the frames and frame counter display are in seconds in relative time, and can be designated up to a single microsecond.</p>
File Name	Sets the end save for all of the blocks during multi-trigger recording.
Folder	File name for the downloaded data
	Folder to save the downloaded data

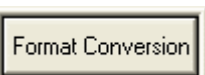
The following operations can be performed for each of the “Download” dialogue buttons.

Download	Downloads the checked data.
Cancel	Click on the “Cancel” button to display the “Interrupt Download” dialogue.
Abort Now	Immediately interrupts the download. Cancels subsequent downloads.
Abort	After finishing the download of the data being downloaded, subsequent downloads are cancelled.
Close	Closes the “Download” dialogue.

Format Conversion

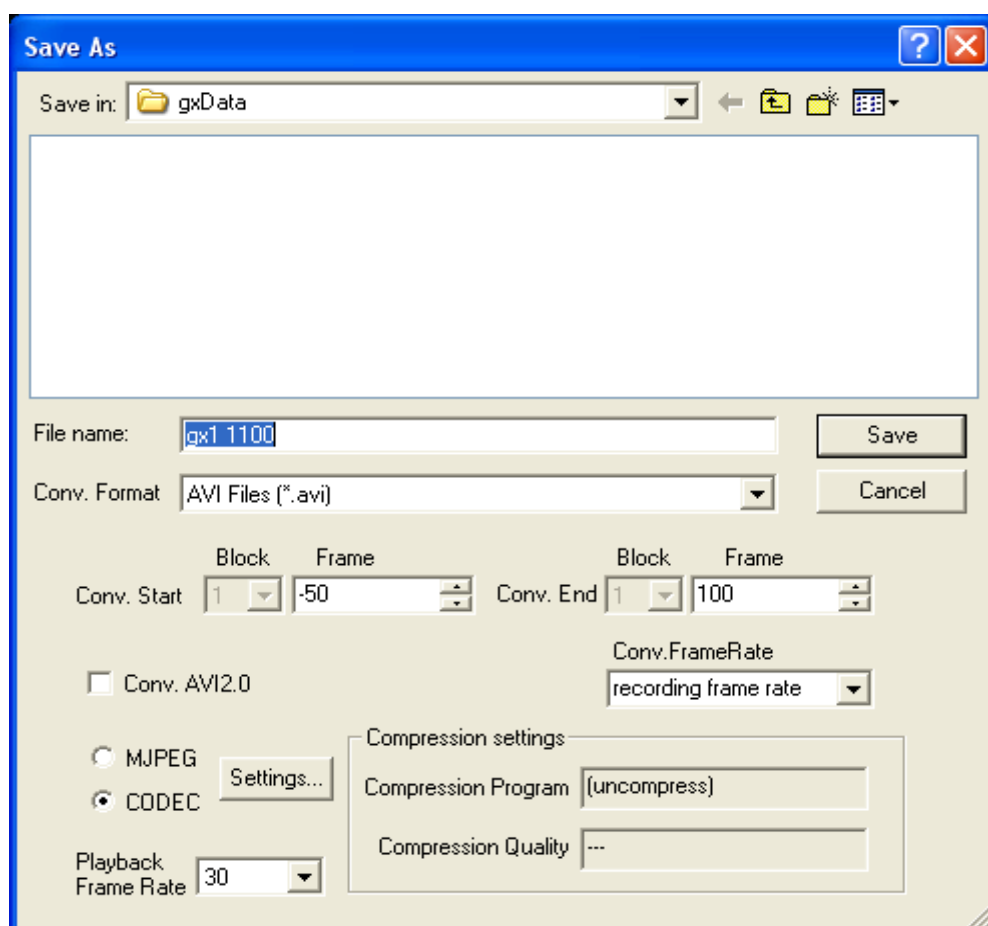
Camera images can be downloaded and converted into AVI, BMP, TIFF and JPEG format from the saved data (MCFF format).

Open the download data (MCFF data) saved with “Open/Image File” on the “File” menu and the names of the open files is displayed on the item list.



Click to display the settings dialogue for conversion saving.

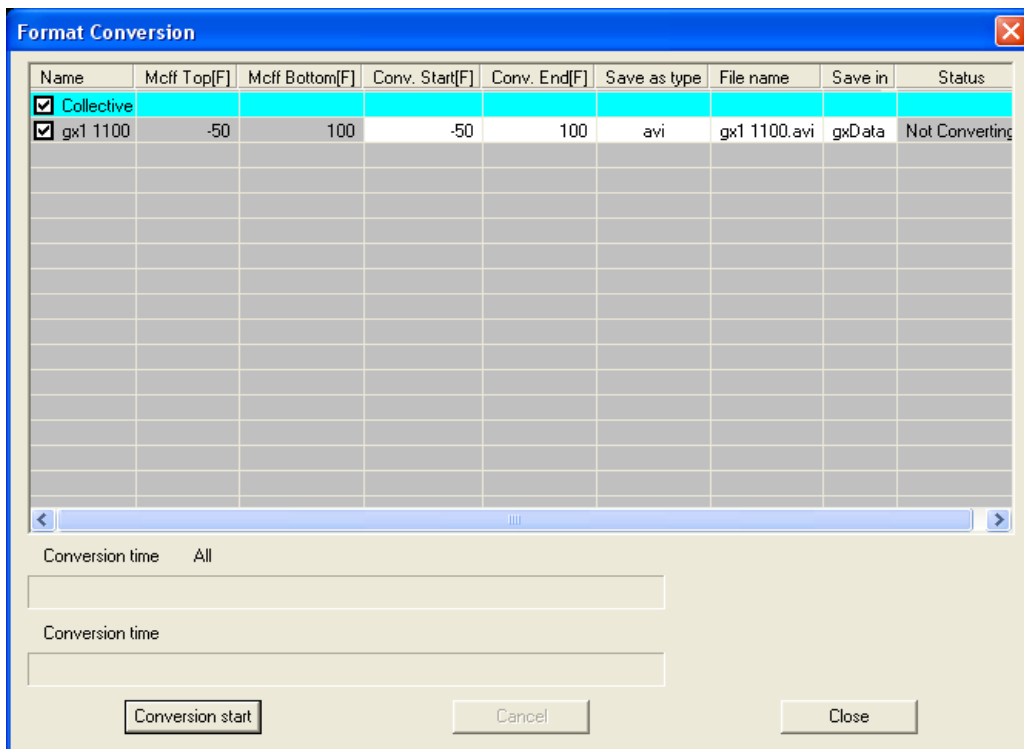
With the optional GUI setting, if the “Format Conversion” button is pressed when individually converting the format conversion display, or if the “Convert Image Format” is clicked after right clicking the MCFF file with the item tool bar, the “Save As” dialogue is displayed.



Set the conversion range, name of file to be saved, folder for saving, compression settings and playback rate, and then click the Save button to start format conversion.

The conversion range is designated using the frame number or trigger frame as the standard in relative time. If the unit for the frame counter display menu is a frame, the units for the frame counter display are in seconds in relative time, and can be designated up to a single microsecond.

With the optional GUI setting, if “Collective (List)” is selected in the Format Conversion Display, click on “Format Conversion” to display the “Format Conversion” dialogue.



Double click on each cell in the table to change the settings.

In the “Collective” row, parameters can be set for all of the open MCFF.

In each MCFF row, parameters can be set for the MCFF selected.

Items that can be set with the “Format Conversion” dialogue

☒ Converts the format for the MCFF checked. When not converting the format, remove the check mark.

Conv. Start Sets the starting frame for the range to be converted [F] or the start time [sec].

If the unit for the frame counter display menu is a frame, the units for the frame counter display are in seconds in relative time, and can be designated up to a single microsecond.

Sets the time to start conversion for all of the blocks during multi-trigger recording.

Conv. End Sets the ending frame for the range to be converted [F] or the end time [sec].

If the unit for the frame counter display menu is a frame, the units for the frames and frame counter display are in seconds in relative time, and can be designated up to a single microsecond.


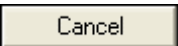

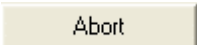
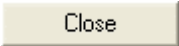
Sets the end conversion time for all of the blocks during multi-trigger recording.

Save as type Designates the type of file after conversion (AVI, TIFF, JPEG, BMP, MCFF).
The default setting is set in “Options” on the “Settings” menu.

File Name File name after format conversion

Save in Folder to save the file with the converted format
If TIFF, JPEG or BMP are designated in “File Type”, a folder is created under
the designated folder, the TIFF, JPEG or BMP are created in that folder.

The following operations can be performed for each of the “Format Conversion” dialogue buttons.

	Converts the format of the MCFF checked.
	Click on the “Cancel” button to display the “Interrupt Format Conversion” dialogue.
	Immediately interrupts the format conversion. Cancels subsequent format conversions.
	After finishing the format conversion of the MCFF selected, subsequent format conversions are cancelled.
	Closes the “Format Conversion” dialogue.

Basic Operating Procedures

The description for the basic operating procedures is divided into that for one camera connection and that for multiple camera connections.

The following description applies to the “Basic Mode”.

1. Single Camera Connection

1-1. Camera Connection

1-2. VIEW

1-3. Change Settings (IE : Change Frame Rate)

1-4. ARM

1-5. Trigger Input

1-6. Playback

1-7. Download

1-8. Convert Format

2. Multiple Camera Connections

2-1. Camera Connections

2-2. VIEW

2-3. Change Settings (IE : Change Trigger Timing)

2-4. ARM

2-5. Trigger Input

2-6. Playback

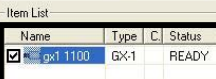
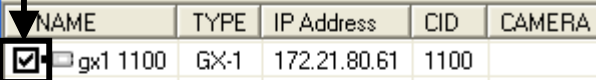
2-7. Download

2-8. Convert Format

1-1. Camera Connection

_____ Check the camera to be connected

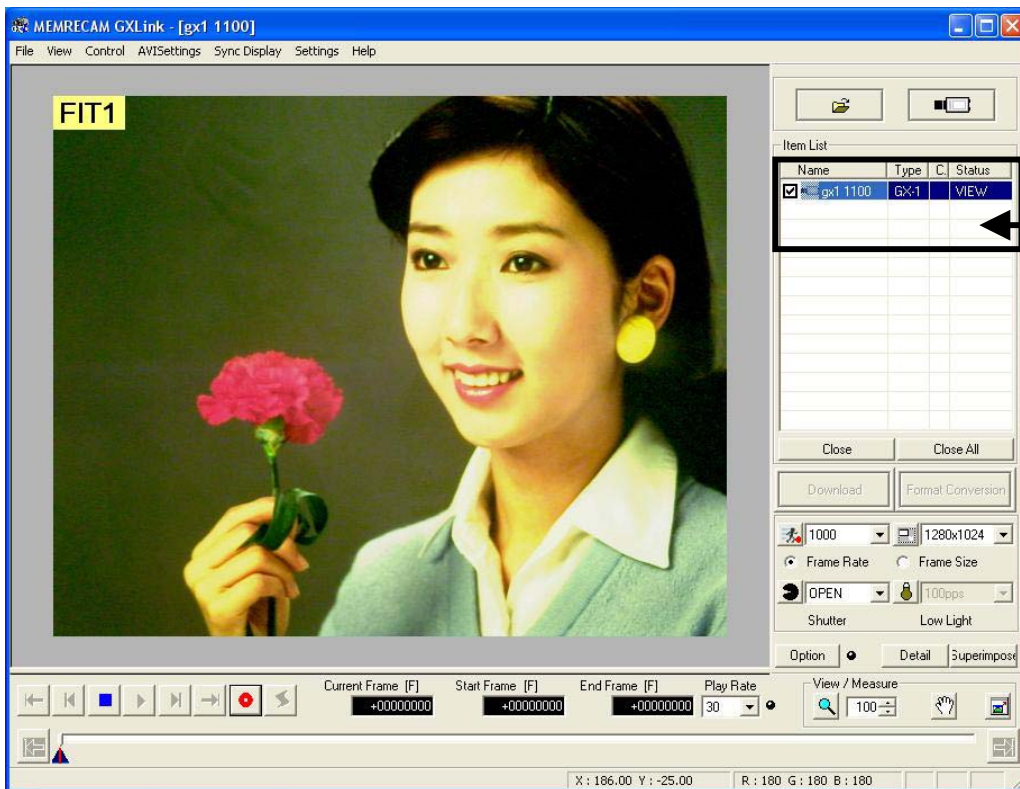
Click “OK” to start connection with the camera.



The live image from the camera is displayed on the image display.

1-2. VIEW

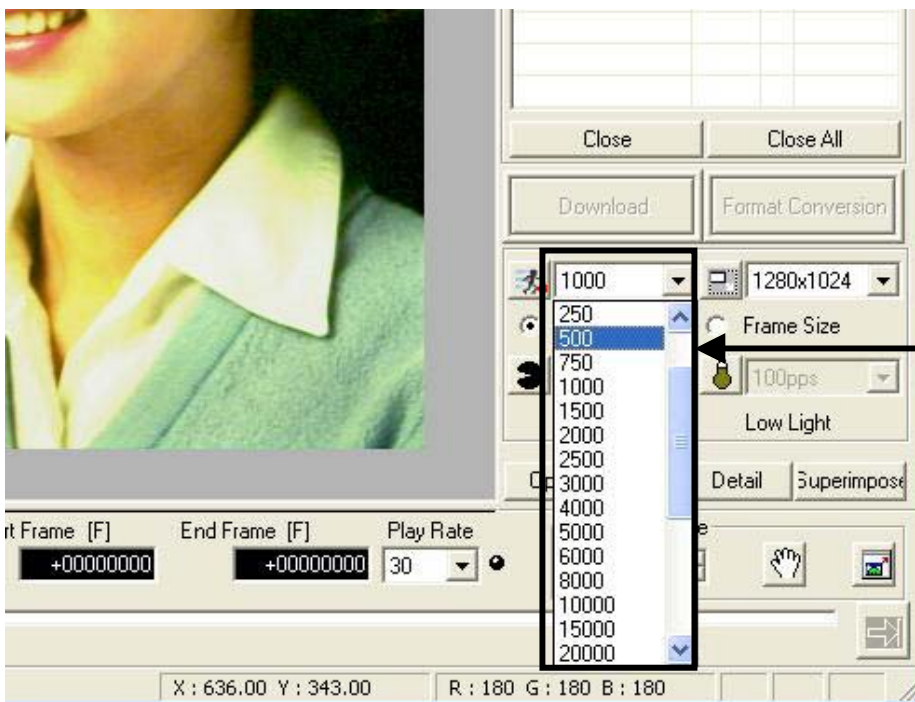
When the camera is READY, click  “VIEW/ARM” on the main tool bar.




When the camera is in the VIEW mode, the “Status” of the item list changes from WAIT to VIEW.

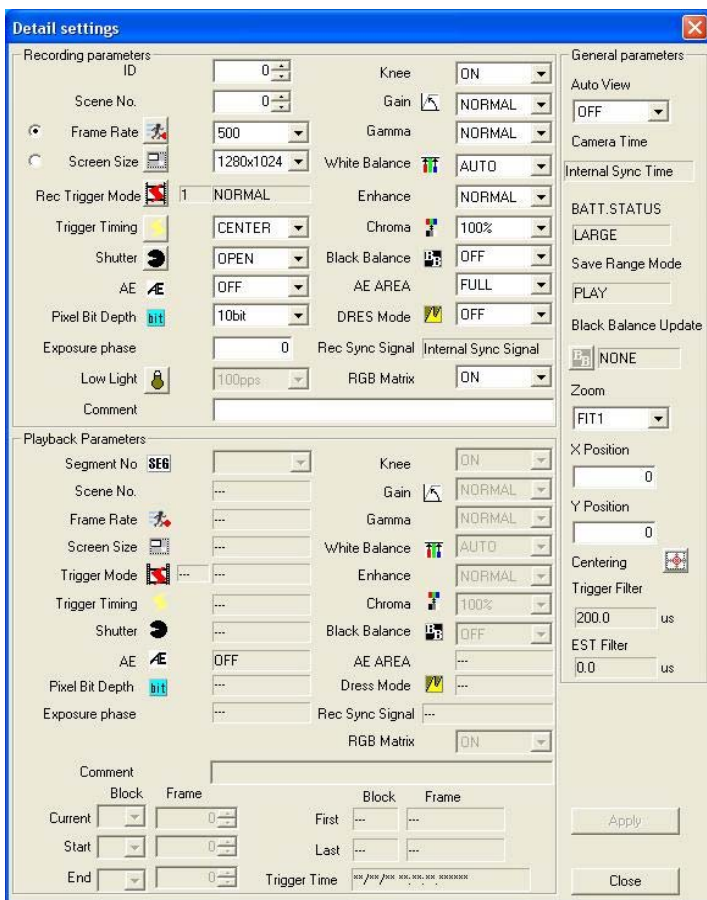
1-3. Change Settings (IE: Change Frame Rate)

1-3.1) When changing the camera settings, click each combination box in the item tool bar to set.




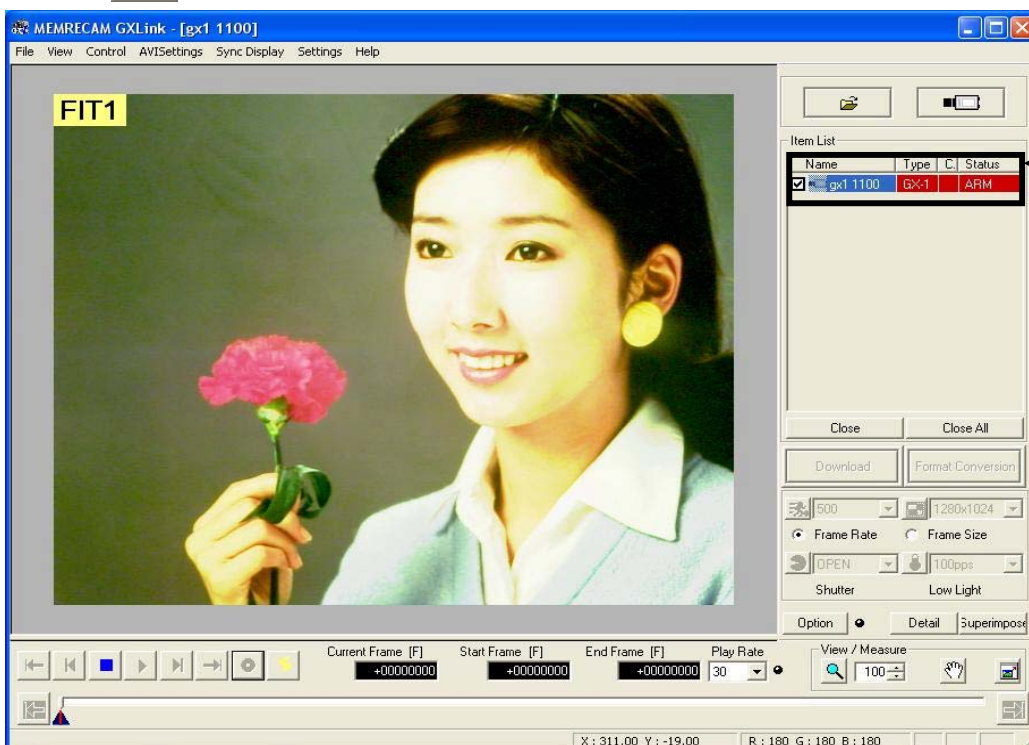
To set the Frame Rate to 500pps, click on “Frame Rate” and click 500.

1-3.2) For more detailed settings, click  for the “Detail Settings” dialogue.




1-4. ARM

Click  “VIEW/ARM” on the main tool bar for camera VIEW.



When the camera is in the ARM mode, the “Status” of the item list changes from WAIT to ARM.

1-5. Trigger Input


1-5.1) Click  "TRIG" on the main tool bar for camera ARM.

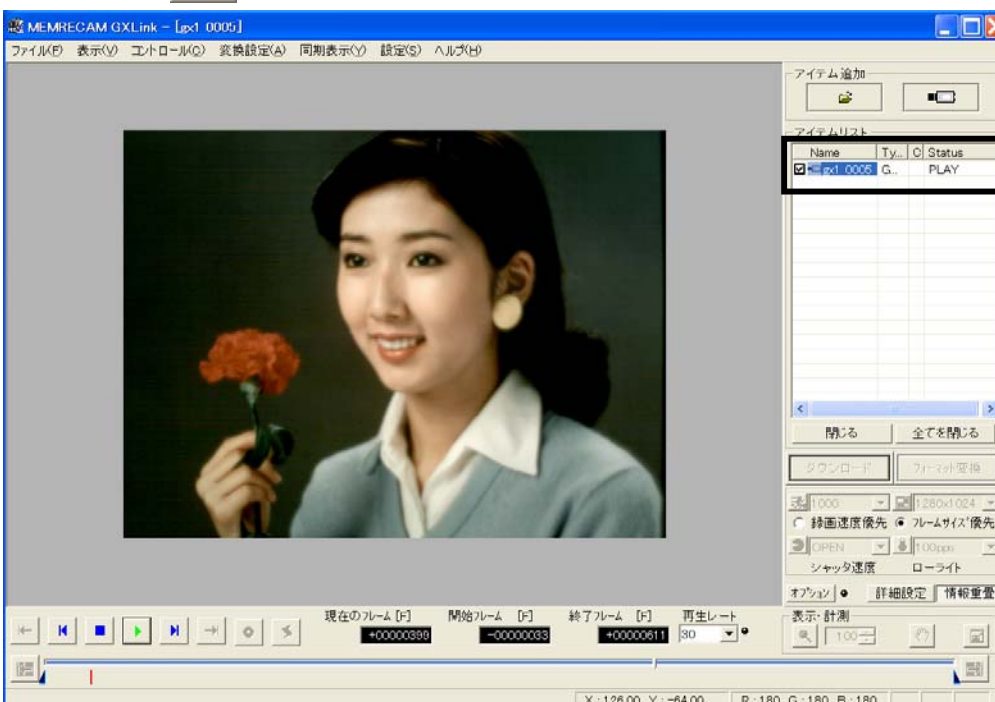


When there is camera trigger input, the camera enters the REC mode and the "Status" on the item list changes from ARM → REC → READY

1-6. Playback


Image playback is possible once recording has been completed.

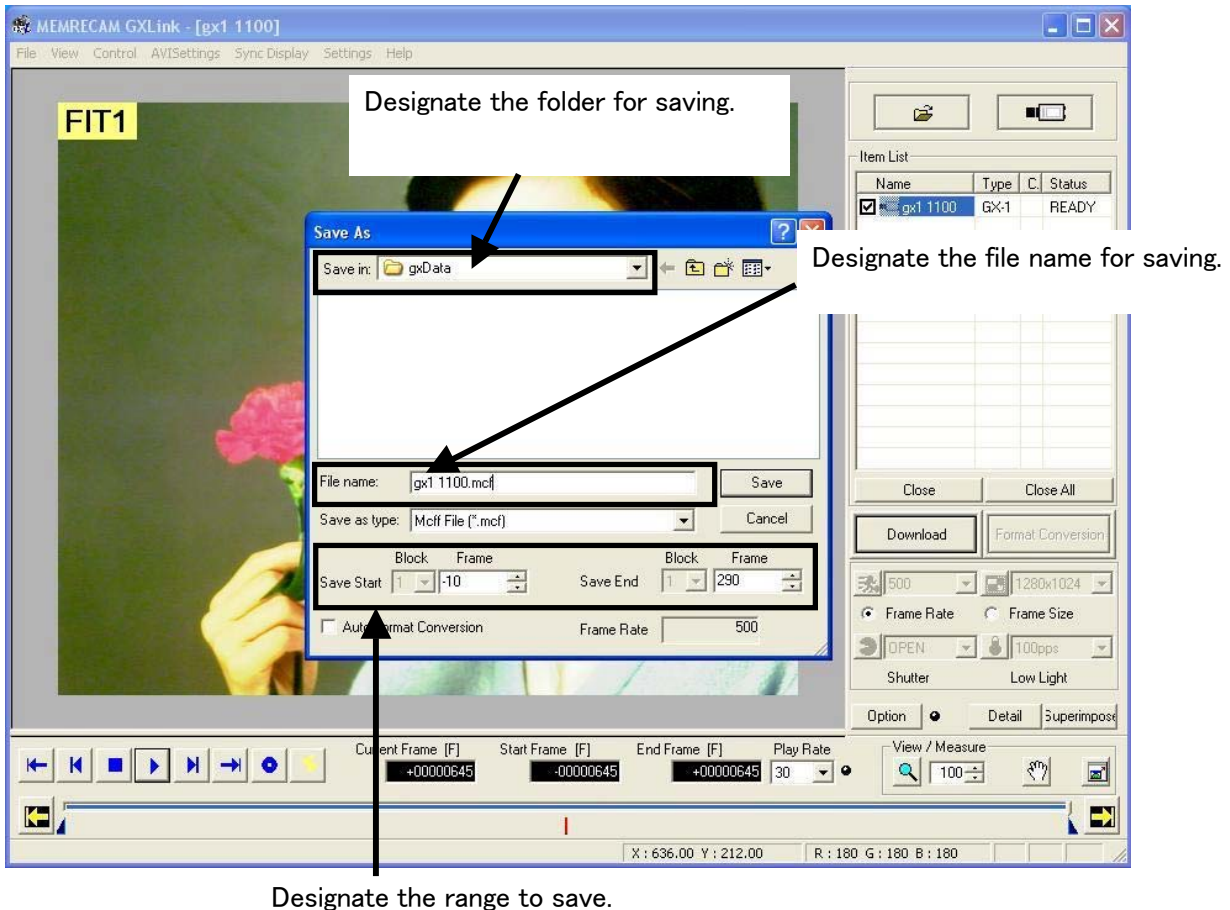
Click  "PLAY" on the main tool bar.



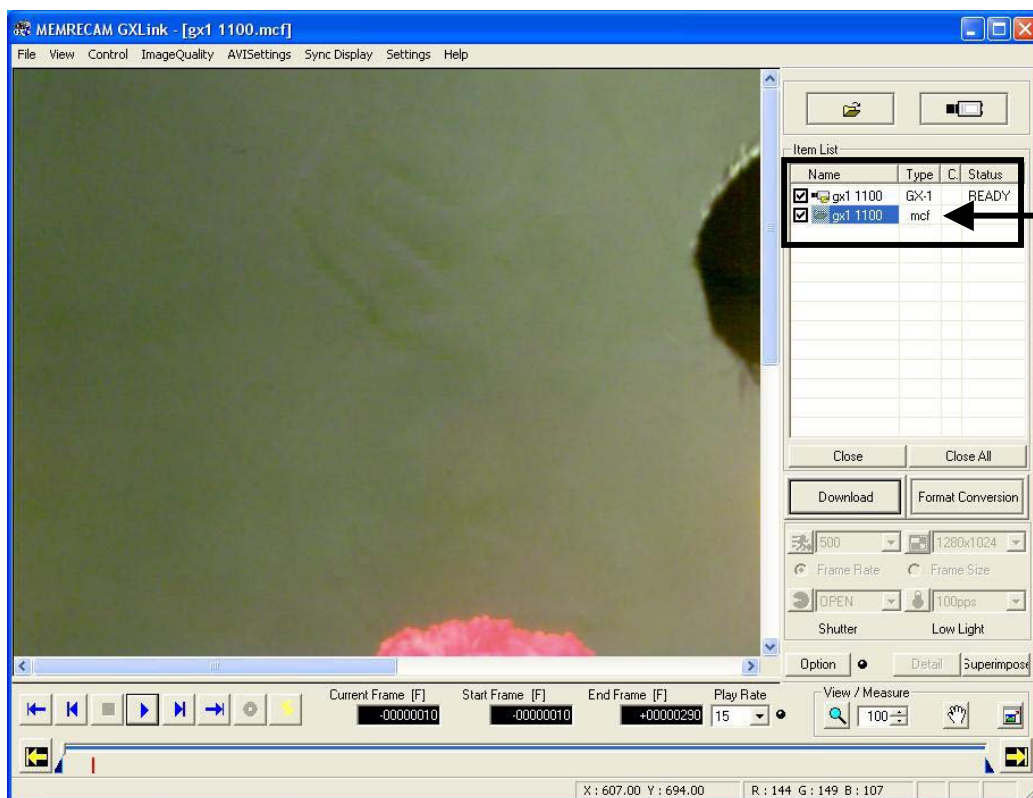
The camera "Status" switches from WAIT to PLAY.

1—7. Download

1-7.1) Downloads the recorded scene when the camera is READY. Click  on the item tool bar.

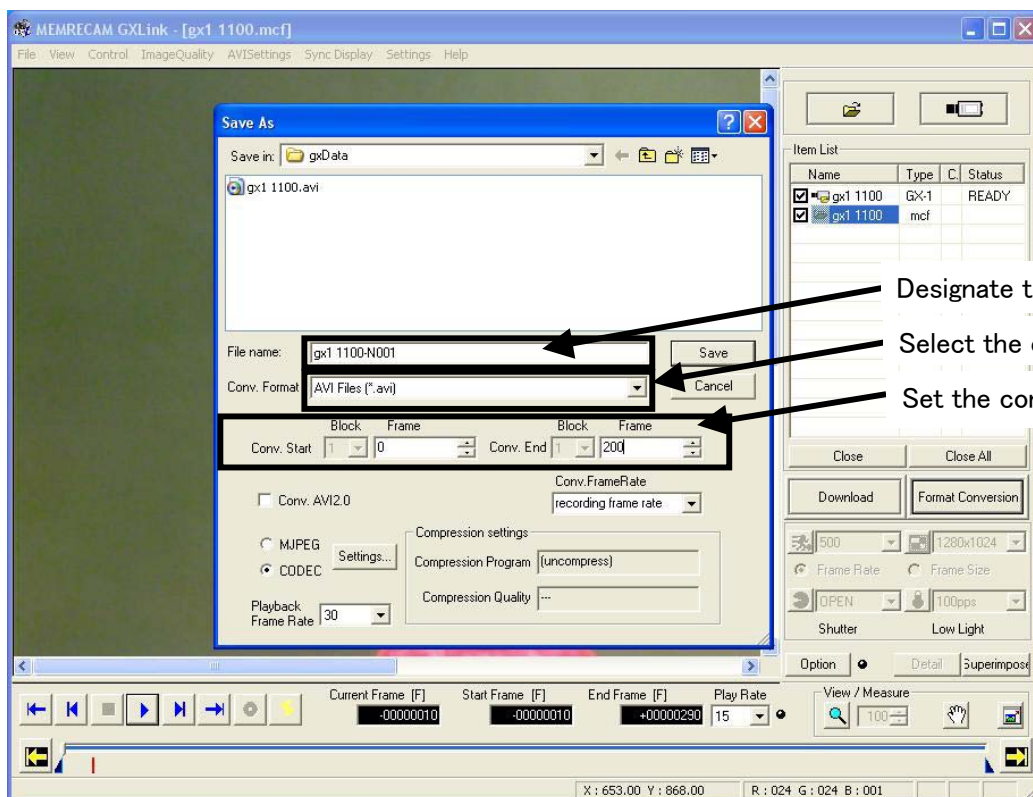


1-7.2) Start the download by clicking “Save” in the “Save As” dialogue.

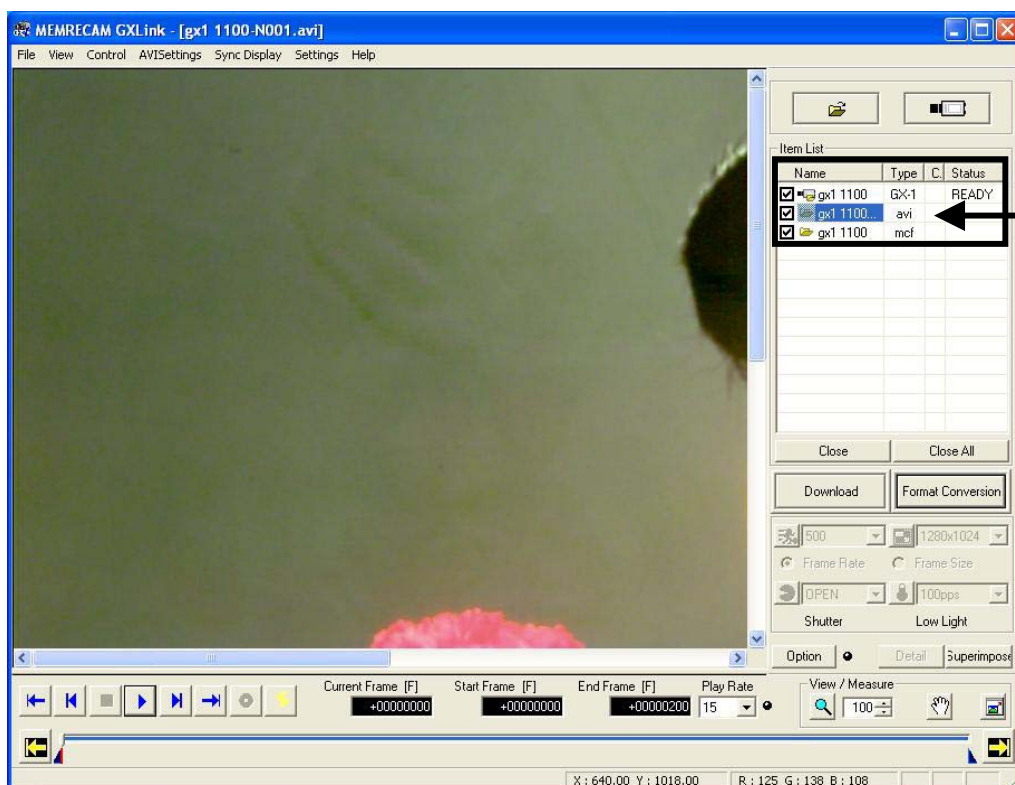
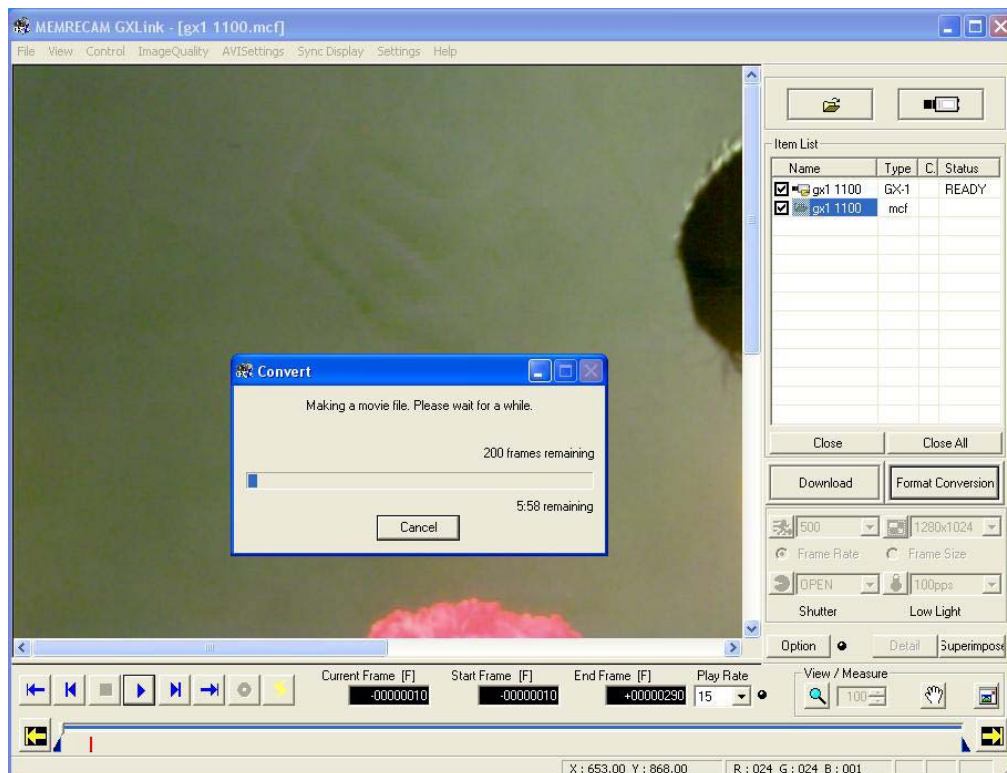


1—8. Convert Format

It right-clicks in MCFF in the item list and the format conversion is selected.



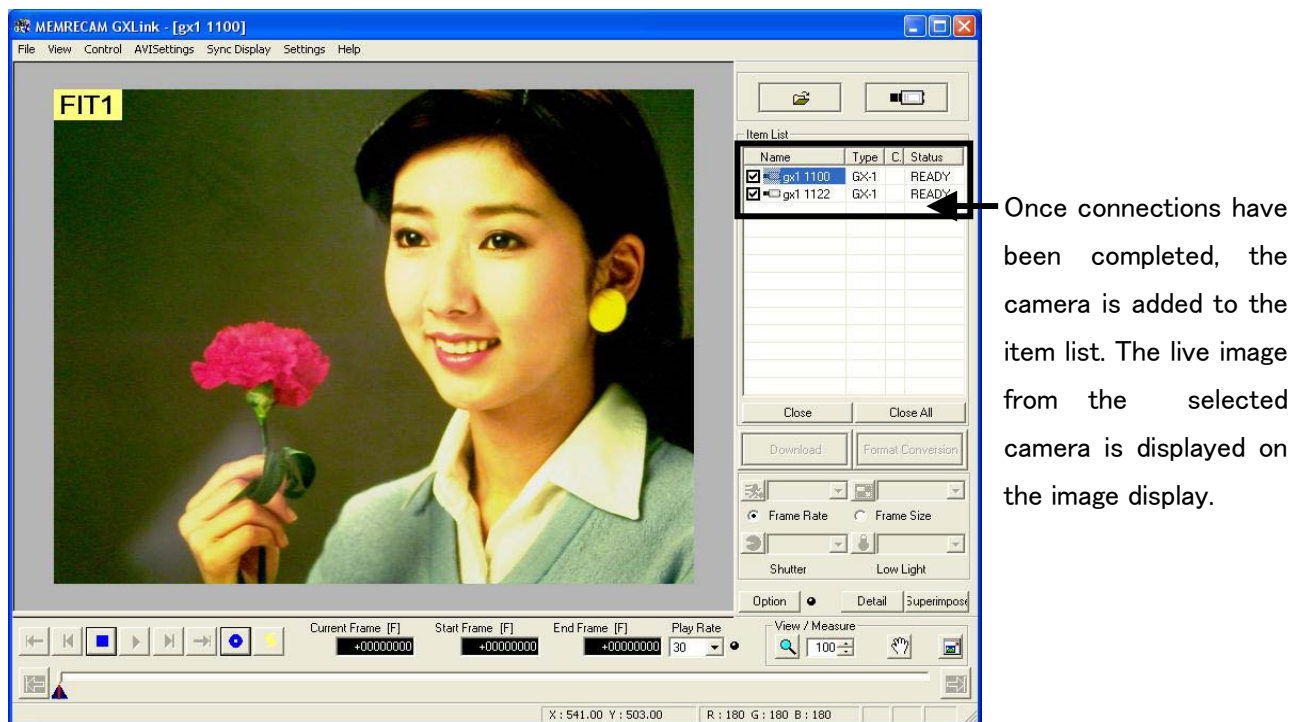
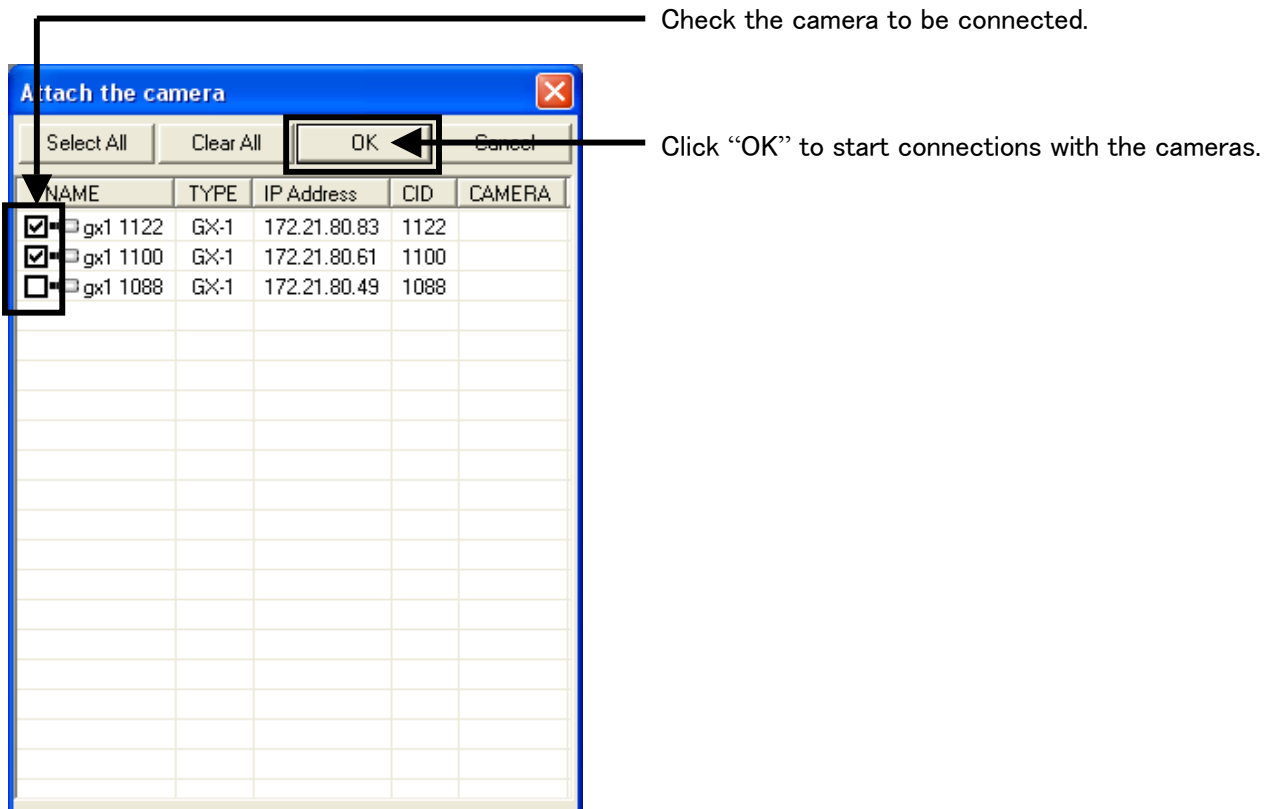
Click “Save” in the “Save As” dialogue to start format conversion.




2. Multiple Camera Connections

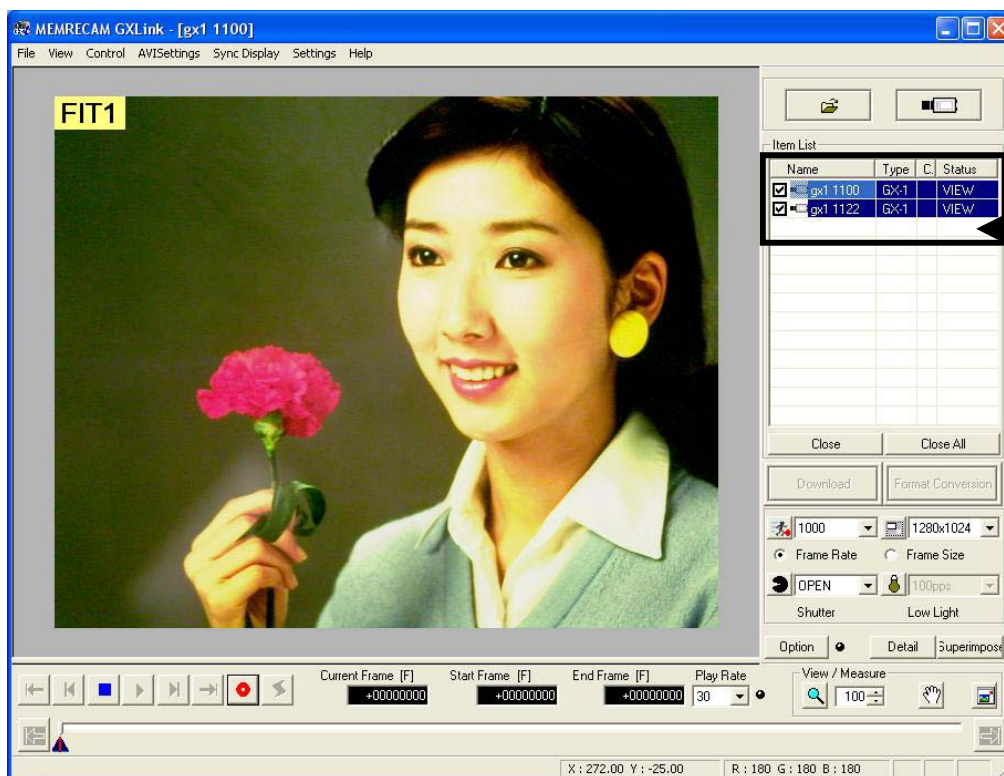
2-1. Camera Connections

Click “Attach the camera”  on the “Item Tool Bar” to start connections with the cameras.




2-2. VIEW

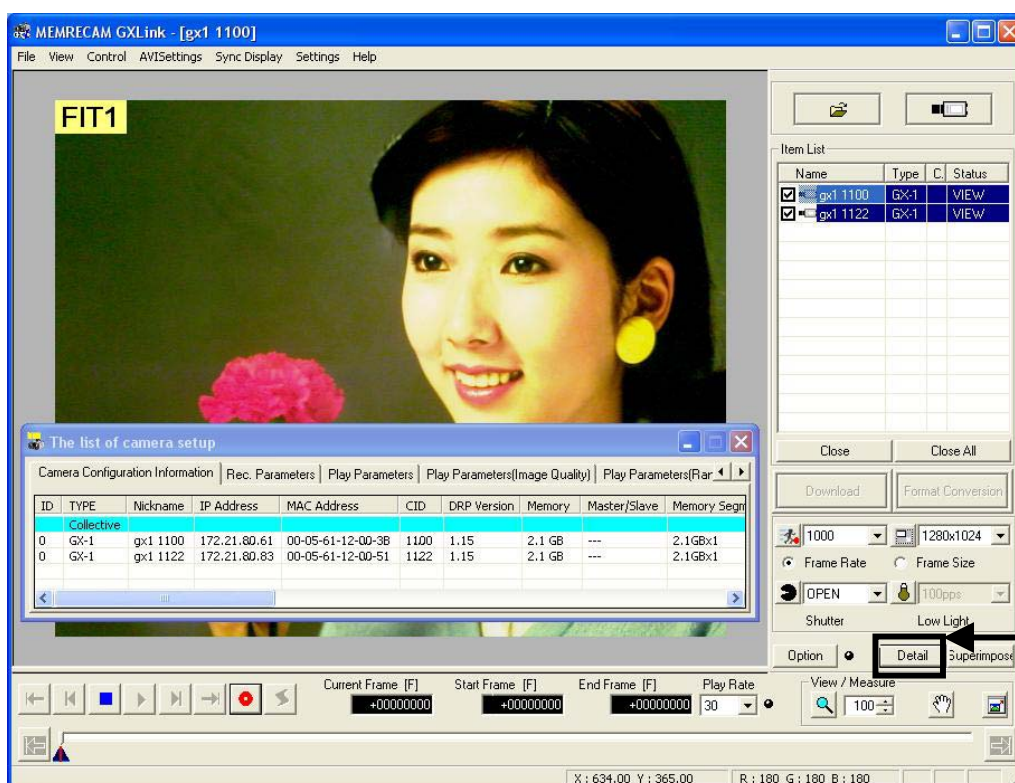
Click  “VIEW/ARM” on the main tool bar when the camera is READY.



When the camera switches to the VIEW mode, the “Status” on the item list changes from WAIT to VIEW.

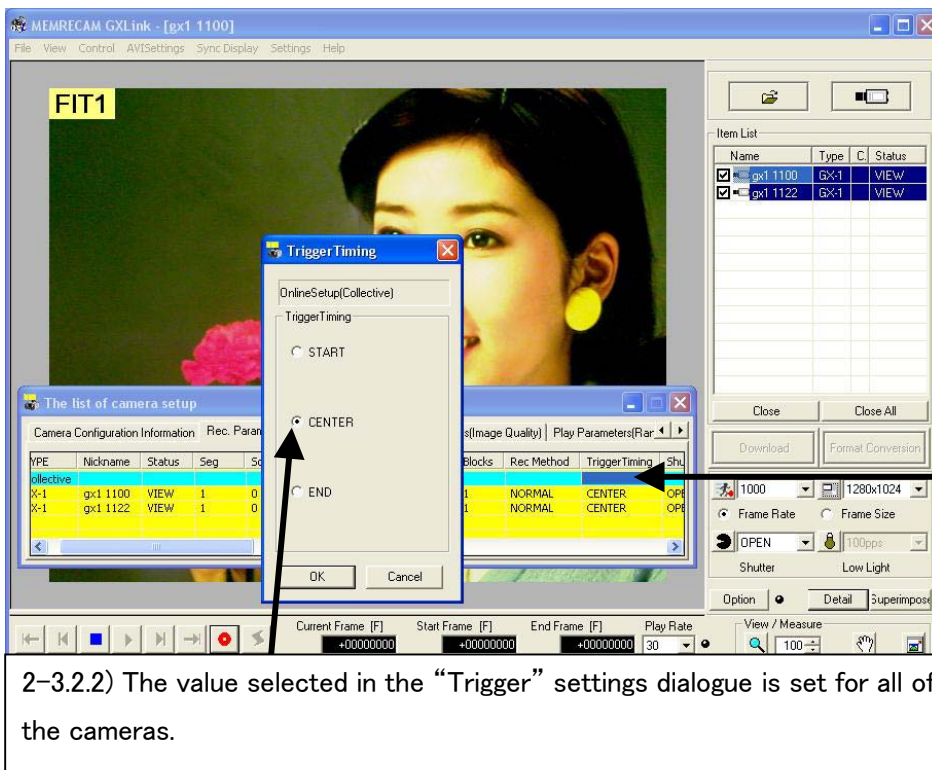
2-3. Change Settings (IE: Change Trigger Timing)

2-3.1) Click “ Detail” on the item tool bar to display the “The list of camera setup”.



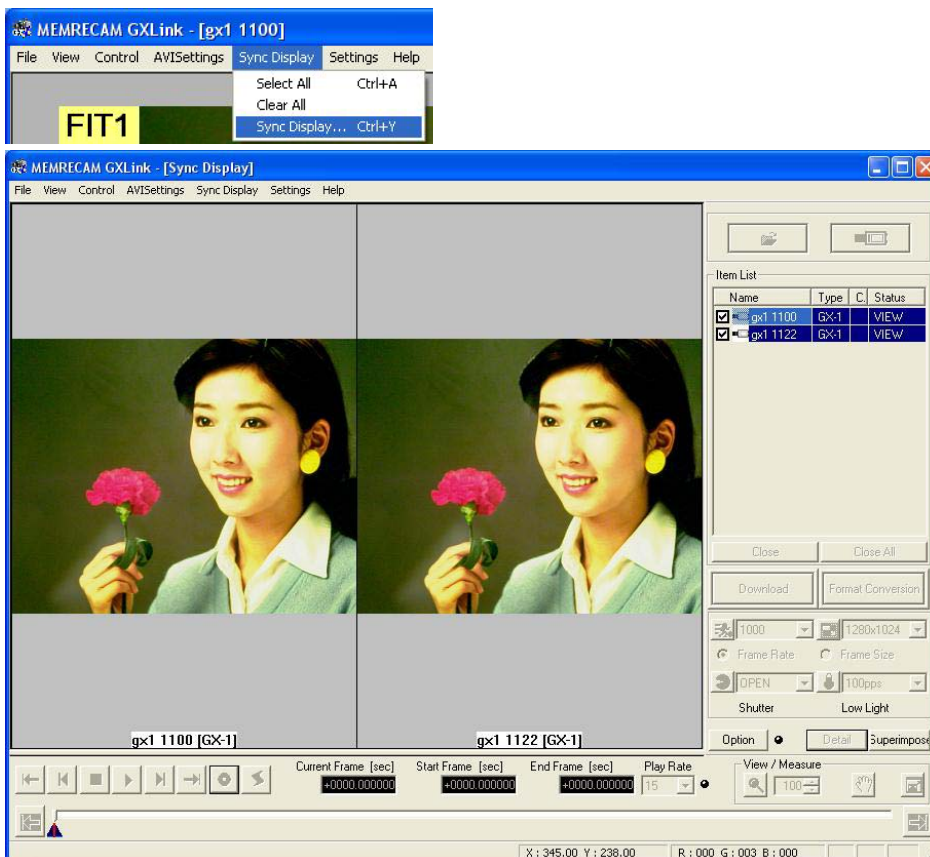
Click to display the “The list of camera setup”.

All of the parameters for connected camera can be set on the “Collective” row in the “The list of camera setup”. “Trigger Timing” settings can be changed by selecting the “Rec. Parameters” tab.




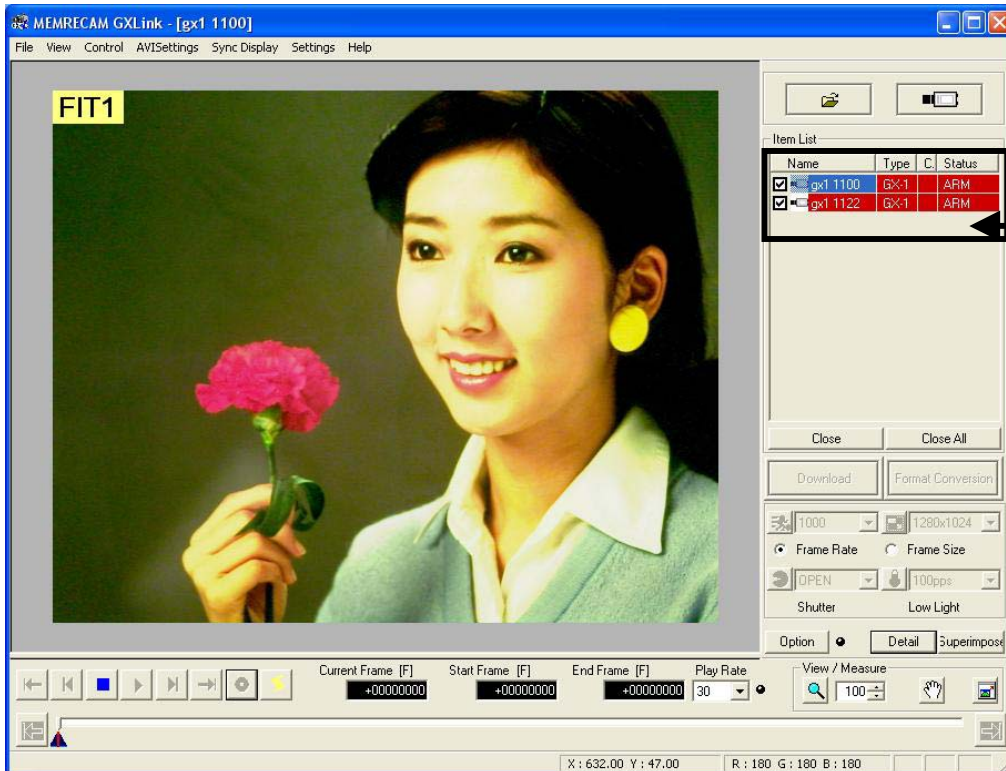
2-3.2.1) Double click on the cell in the “Collective” row of the “Trigger Timing” to display the “Trigger Timing” settings dialogue.

All of the camera recordings can be simultaneously displayed from the menu.




2-4. ARM

2-4.1) Click  “VIEW/ARM” on the main tool bar when the camera is in VIEW.



When the camera is in the ARM mode, the “Status” on the item list switches from WAIT to ARM.

2-5. Trigger Input


Click  “TRIG” on the main tool bar when the camera is in ARM.

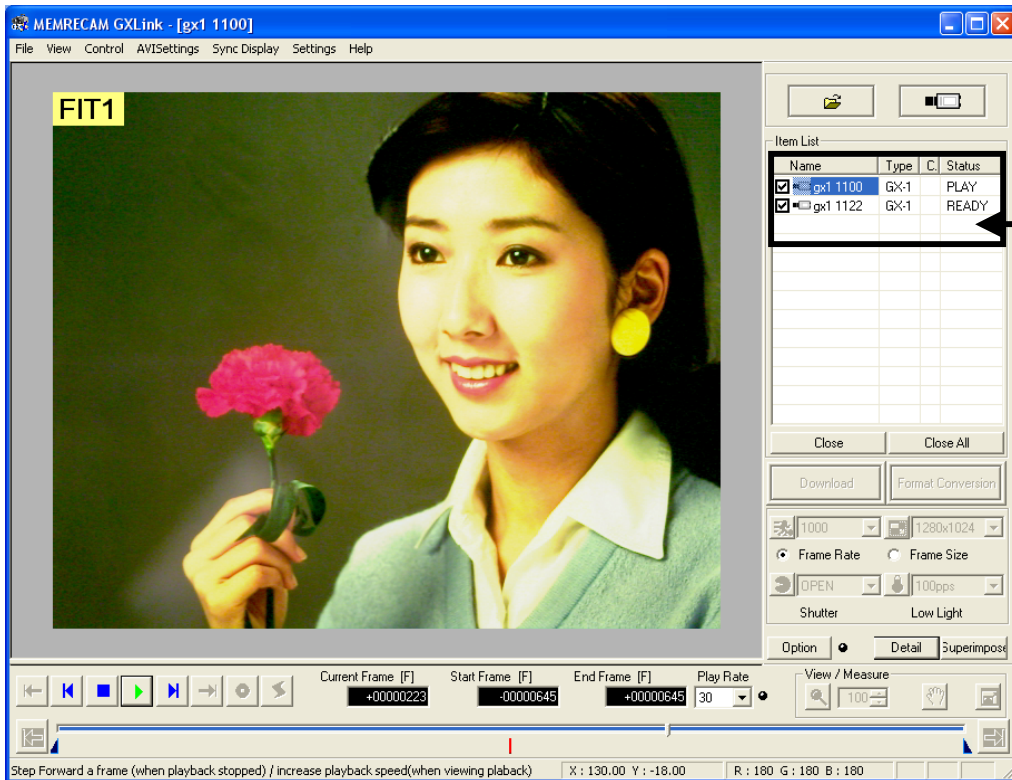


Once there is trigger input on the camera, the camera switches to the REC mode and the “Status” on the item list Status changes from ARM → REC → READY.

2—6. Playback

Image playback is possible once recording has been completed.

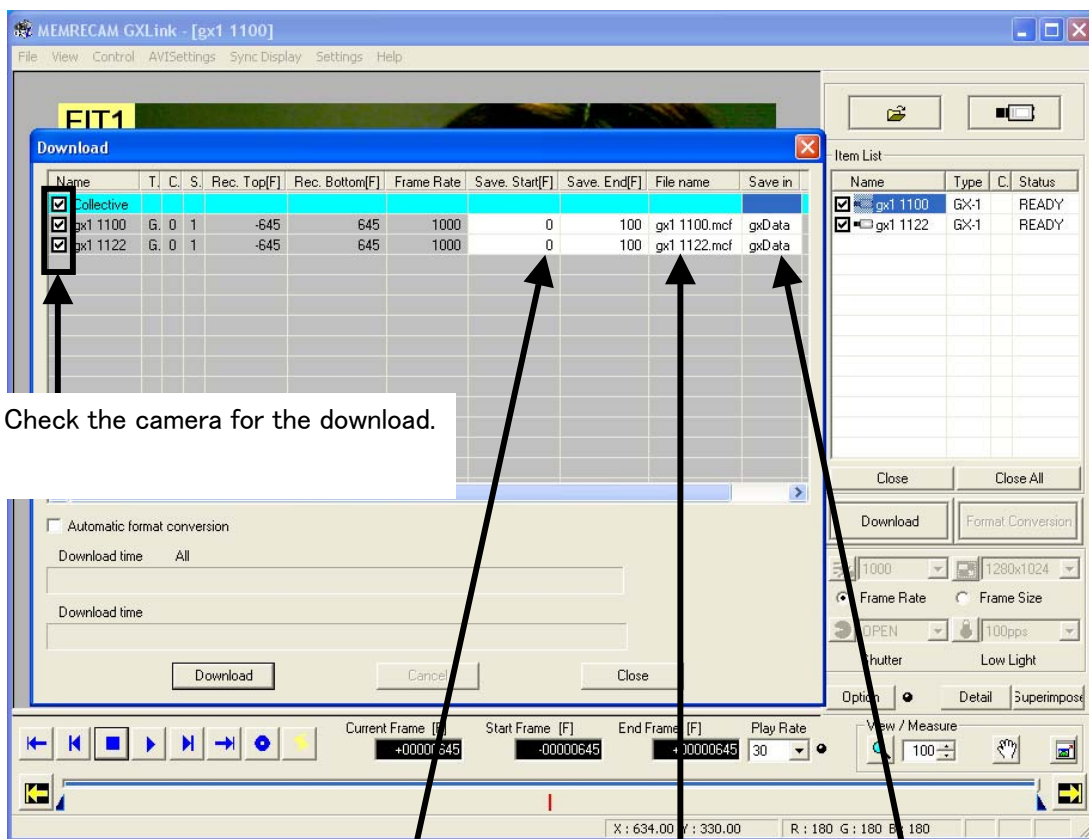
Click  “PLAY” on the main tool bar.



The “Status” of the selected camera switches from WAIT to PLAY.

2-7. Download

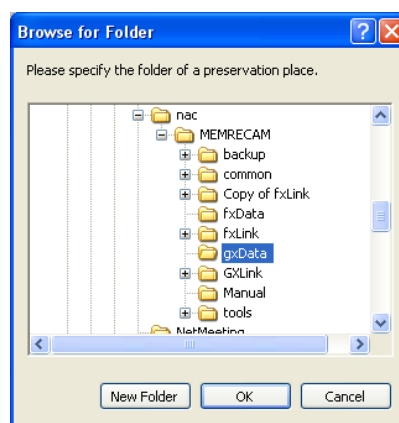
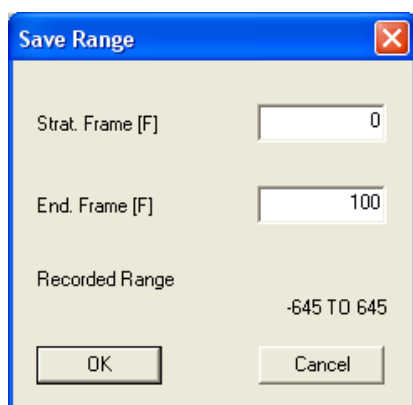
2-7.1) Downloads the recorded scene when the camera is READY. Click “Download” on the item tool bar.




Check the camera for the download.

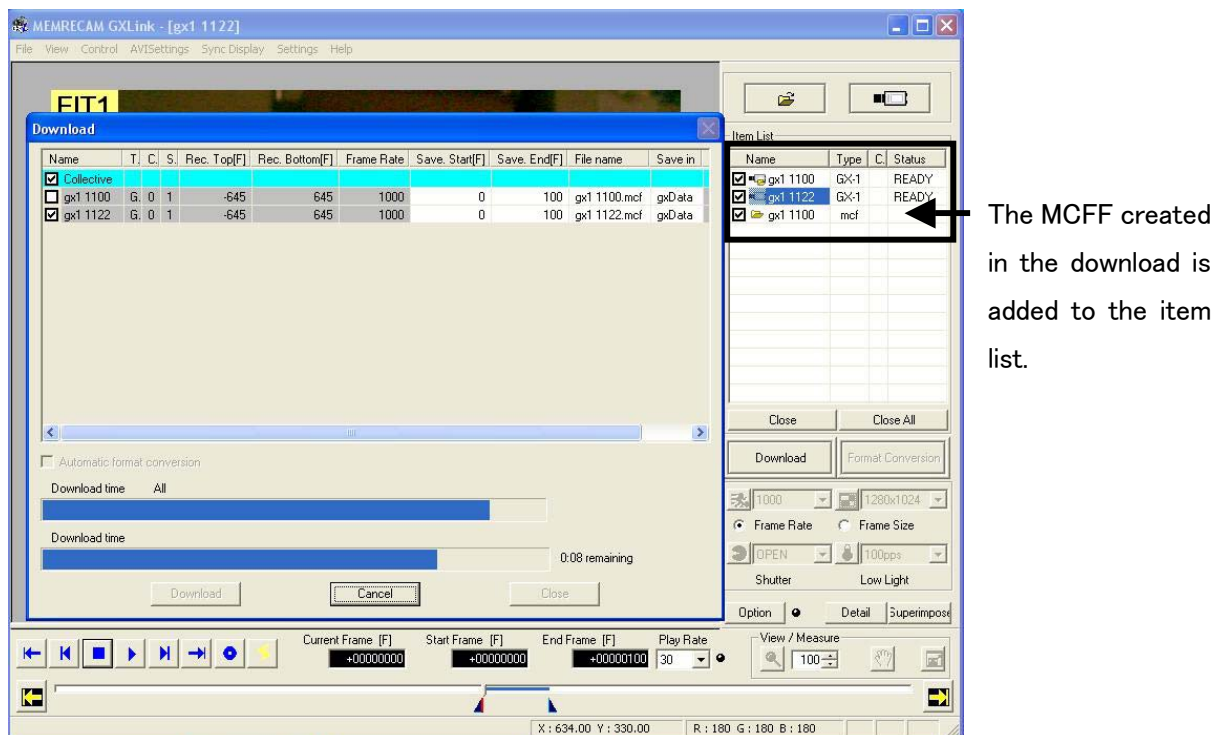
Double click on the cell to set the range to saving.

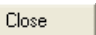
Double click on the cell for the folder to set the folder for saving.

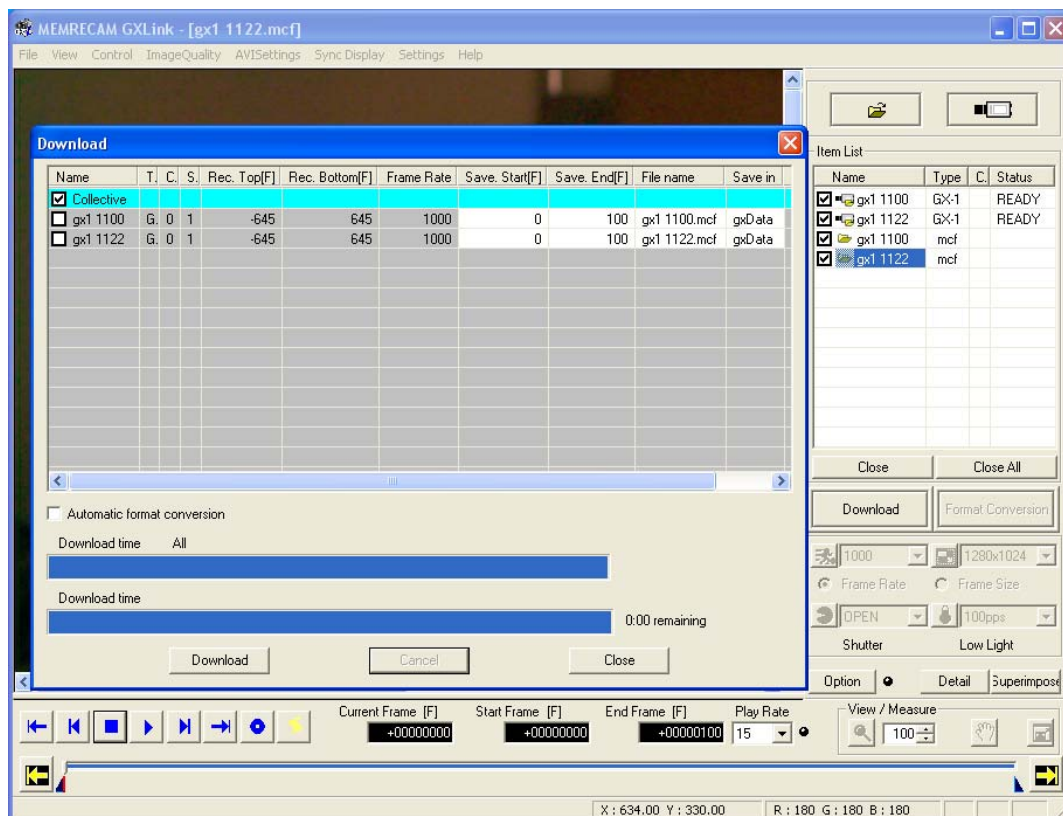


Click on the cell of the file name for saving and to directly edit the file name.

Click “Start Download”  on the “Download” dialogue to start downloading.



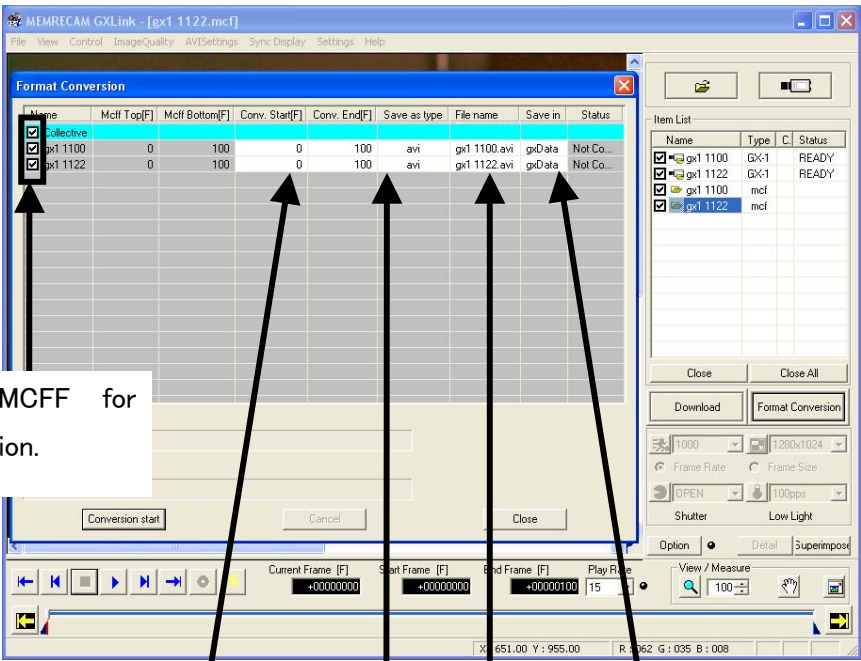
Click “” after all of the images have been downloaded to close the “Download” dialogue.



2—8. Convert Format

Click options on the item tool bar for Collective (List) of the Format Conversion Display for the GUI setup tab.

2—8.1) Add MCFF to the item list for format conversion. Click “Format Conversion” on the item list.



Check the MCFF for format conversion.

Double click on the start conversion [F] and end conversion [F] cell to set the conversion range.

Double click on the cell for the folder to designate the folder for saving.

Double click on the cell to set the type of file for format conversion, compression program and playback rate.

Click on the cell for the file name for saving to directly edit the file name.

Conversion Range

Strat. Frame [F]

End. Frame [F]

Mcff Range 0 TO 100

OK Cancel

Browse for Folder

Please specify the folder of a preservation place.

- nac
 - MEMRECAM
 - backup
 - common
 - Copy of fxLink
 - fxData
 - fxLink
 - gxData
 - GXLink
 - Manual
 - tools
 - NetMachine

New Folder OK Cancel

The kind of file

Conv. Format **AVI Files (*.avi)** Conv. Frame Rate **recording fram**

☐ Conv. AVI2.0

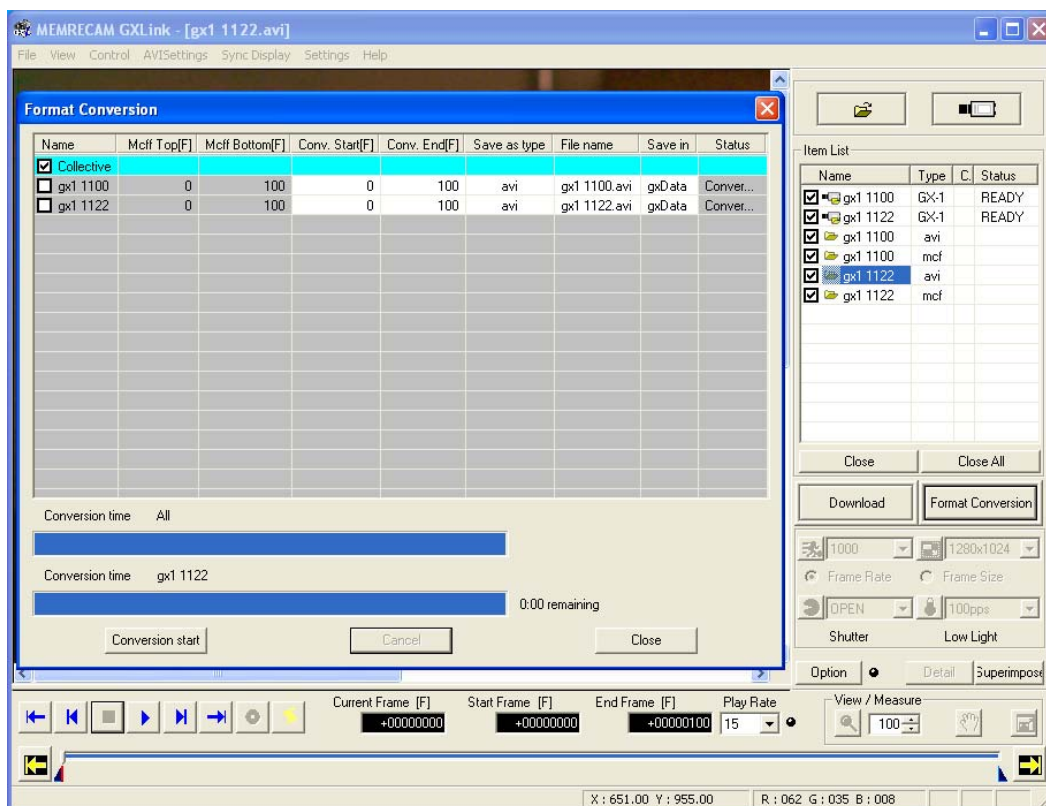
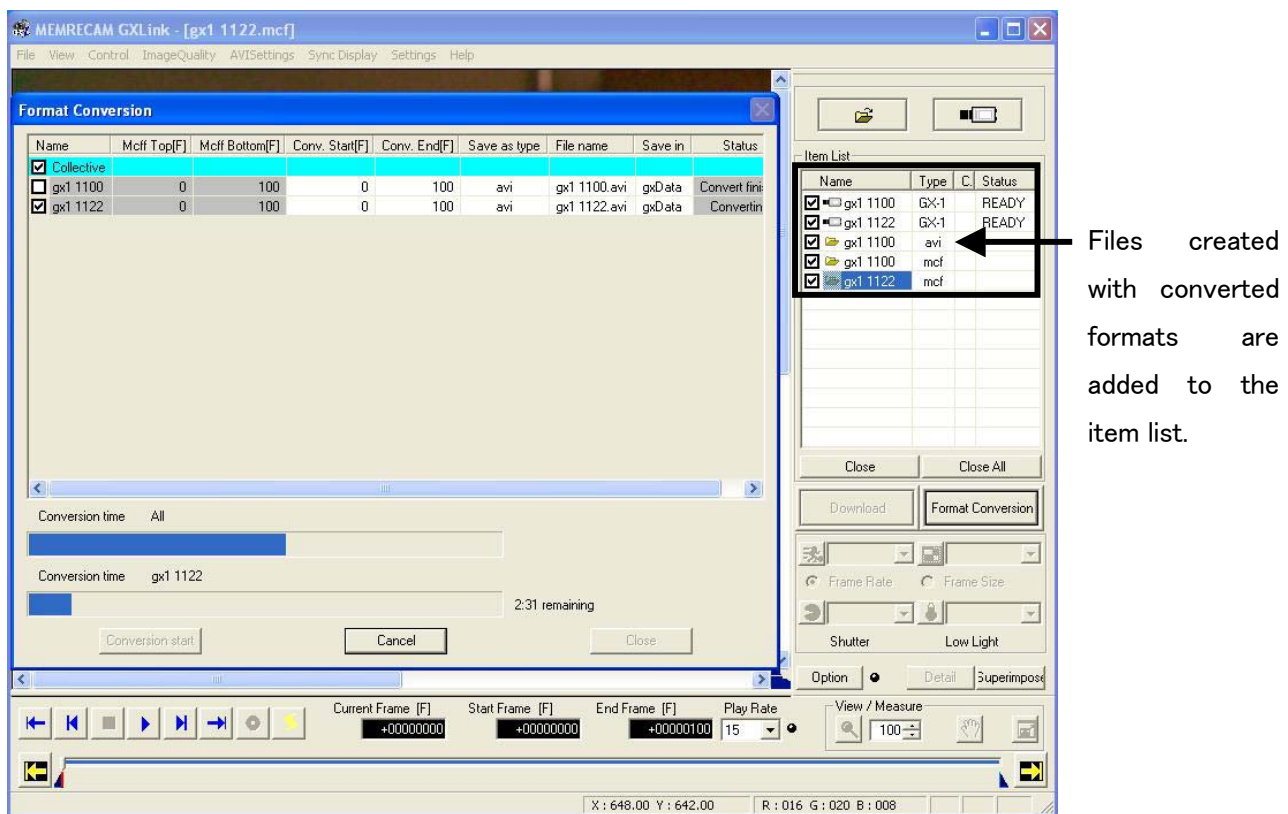
☐ MJPEG Settings... Compression Program **(uncompress)**

☒ CODEC Compression Quality **---**

Playback Frame Rate **30**

OK Cancel

2-8.2) Click “**Conversion start**” in the “Format Conversion” dialogue to start format conversion.



Click “**Close**” after format conversion on all of the images has been completed to close the “Format Conversion” dialogue.