



Multi-Channel Wave Inserter (MCWI) Module introduced for NAC's HotShot sc Cameras

NAC Image Technology, the most experienced name in high-speed video, introduces the Multi-Channel Wave Inserter (MCWI) Data Acquisition Module for self contained HotShot Cameras...



NAC's new **Multi-Channel Wave Inserter (MCWI) Data Acquisition Module** is now available as an optional accessory item for the HotShot sc cameras.

The MCWI synchronizes captured data (analog and digital) with your image information. Both the video and data are simultaneously captured to the camera memory. The data is permanently recorded to the

file header in each frame of all images. Mounting directly to the bottom of the HotShot sc camera, the MCWI is designed for "ease-of-use" with both new and existing camera systems.

The MCWI Module attaches directly to all of the HotShot sc (self-contained) products:

- ♦ Integrated DAQ
- ♦ Four 12 Bit Analog and 16 Digital Inputs
- ♦ 10 simultaneous samples per frame, each channel, up to 20,000 fps (Above 20,000 fps, the number of channels is reduced and the number of samples per frame is reduced)
- ♦ Output from MCWI to High Speed I/O port on sc's camera body
- ♦ Tripod mount embedded in MCWI
- ♦ Captured data is permanently associated with image information
- ♦ Data can be exported to Excel

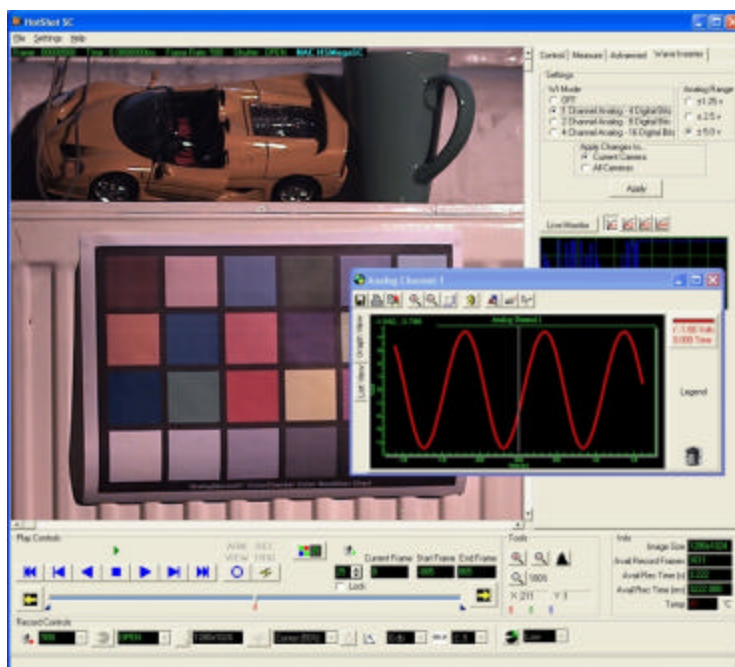
Choose NAC to help address your high-speed imaging needs and you'll see *The Visible Difference!*

Visit our web site at www.nacinc.com

HotShot MCWI-Live Image



HotShot MCWI—Recorded Image



Contact Us in the Americas:

NAC Image Technology
193 Jefferson Ave, Suite 102
Salem, MA 01970 U.S.A.
Tel: (833) 600-0280
E-mail: sales@nacinc.com

Contact Us in Europe:

MESSRING GmbH
Friedrichshafener Straße 4c
82205 Gilching, Germany
Tel: +49 8153 407 96 333
E-mail: sales@messring.de

Visit our web site at www.nacinc.com